



FIGGE ART MUSEUM

2023/24 Annual Report to Our Community

CONTENTS

- 3 Director's Report
- 4 Exhibitions
- 12 Acquisitions
- 14 Education
- 20 Development

Call 563.345.6649 or visit www.figgeartmuseum.org to learn more about how you can join in supporting the Figge's mission of bringing art and people together.

IMPACT BY THE NUMBERS

85,552

Museum Visits

161

Free Public Programs

21

Exhibitions on View

14,025

Visitors Participating in Public Programs

44,931

People Enriched by Art Education Programs

1,032

Volunteers

1,297

Memberships

20,773

Social Media Followers

260

Works added to the Collection

109

Community Partners

2,724

Students & Teachers School Tours

204

Classes & Camps Offered

NEWS FROM THE FIGGE ANNUAL REPORT EDITION

ISSUE 56

Published throughout the year at no charge for members, friends, and people interested in the museum.

HOURS

See website to confirm hours

Monday	Closed
Tuesday	10AM - 5PM
Wednesday	10AM - 5PM
Thursday	10AM - 8PM
Friday	10AM - 5PM
Saturday	10AM - 5PM
Sunday	12PM - 5PM

Facility rentals 563.345.6657
Wheelchairs available
ASL interpreters upon request

ADMISSION

\$14 Adults
\$10 Seniors & Students with ID
\$8 Children Ages 4-12
Free for Children Under Age 4
AAA Members Save \$2

FREE ADMISSION

Thursdays from 5PM - 8PM
Second Saturday of the Month
Seniors First Thursday of the Month
Active U.S. Armed Forces and their families



Grand Lobby at the Figge Art Museum



Figge Art Museum is supported, in part, by the Iowa Arts Council, a division of the Iowa Department of Cultural Affairs, and the National Endowment for the Arts.

IOWA DEPARTMENT OF CULTURAL AFFAIRS

IOWA ARTS COUNCIL
PRODUCE IOWA
STATE HISTORICAL SOCIETY OF IOWA

THE CURRENT *Iowa*

is the exclusive hospitality sponsor for the Figge Art Museum



IOWA ARTS COUNCIL
IOWA DEPARTMENT OF CULTURAL AFFAIRS

NATIONAL ENDOWMENT FOR THE ARTS
arts.gov

Home of the City of Davenport art collection.

Cover image: Hans Hofmann (American, 1880-1966), Untitled (detail), circa 1936, oil and graphite on canvas, 32 x 26 inches, Figge Art Museum, The Lewis Collection, Gift of Linda and J. Randolph Lewis, 2024.34.2 © Hans Hofmann

DIRECTOR'S REPORT

As the new Executive Director and CEO of the Figge Art Museum, I am deeply honored to continue serving both the museum and our community in this exciting new role. During the past six months as Interim Executive Director, I've seen firsthand the innovation, creativity, and dedication that define our museum's culture. This past year has been one of significant growth and transformation, and I want to begin by expressing my gratitude to former Executive Director and CEO, Michelle Hargrave. Michelle's visionary leadership has left a lasting legacy, and we are thankful for her contributions to shaping the museum's future.

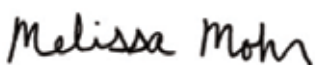
This year has seen 21 diverse exhibitions and 256 new acquisitions, including a remarkable donation of artworks from Dr. Randy and Linda Lewis, which added 44 pieces of modern and contemporary art to the collection and is valued at \$14 million. The Lewis Collection significantly enhances our ability to present a more comprehensive art historical narrative, featuring renowned artists like Marsden Hartley, Alice Neel, and many more. This donation has truly elevated the Figge's collection, and these works, along with the many other gifts we've received, ensure that our collection remains a source of inspiration and cultural enrichment for our community and beyond.

In our ongoing commitment to accessibility and engagement, we've expanded the ways in which people can connect with art through creative educational programming and new access points. One key initiative this year was the launch of Free Second Saturdays, made possible by a grant from the Art Bridges Foundation's Access for All initiative. This program offers our community free admission to the museum on the second Saturday of every month and a variety of educational activities that center inclusivity, creativity, and connections between individuals of all ages and backgrounds.

Our continued collaboration with renowned artist Leo Villareal has been an amazing endeavor, culminating in the final preparations for *Evanescent Field*, a monumental light sculpture set to be unveiled in early 2025. Expected to generate an annual economic impact of as much as \$2.5 million, *Evanescent Field* will serve as a centerpiece of the City's riverfront development, drawing visitors and creating new opportunities for meaningful engagement. We are incredibly grateful to everyone who has made this project a reality and eagerly look forward to sharing this extraordinary work with the world.

These achievements are made possible by the unwavering support of our Board of Trustees, staff, volunteers, members, and community—thank you for being part of the Figge Family! As we approach the Figge's centennial year, I am energized by the opportunity to guide the museum toward this significant milestone. Together, we will continue building on the foundation of our rich history while embracing new ideas to ensure the Figge remains a vibrant cultural hub for generations to come.

See you at the Figge,



Melissa Mohr | Executive Director & CEO



SUDDENLY A FOKKER
TRIPLANE COMES DIVING
DOWN OUT OF THE SUN!



IT'S THE RED BARON!!



OUR PLAN
WITH BU
DOWN



©PNTS

The Life & A OF CHARLES M. SCH

PEANUTS.

by
SCHULZ



SUDDENLY A FOKKER

IT'S THE RED

LET'S BEING KID...
LLETS! WE'RE GOING
IN FLAMES!



Art SCHULZ

THE LIFE AND ART OF CHARLES M. SCHULZ

June 3, 2023 – September 3, 2023

The Life and Art of Charles M. Schulz explored the story behind *Peanuts*. The exhibition featured fifty-two original comic strips with popular characters, like Snoopy, Charlie Brown, and Woodstock, as well as sketches, photographs, and elements from Schulz's studio. A life-size re-creation of Lucy's psychiatry stand and a comic drawing station encouraged visitors to join in on the fun. *The Life and Art of Charles M. Schulz* was curated by the Charles M. Schulz Museum and Research Center in Santa Rosa, California, U.S.A.

PRESENTATION AT THE FIGGE

Contributing Sponsors
Connie and Chris Connolly
John Gardner and Cathy Weideman
GoGo Enterprises, LLC
Xentronics Company

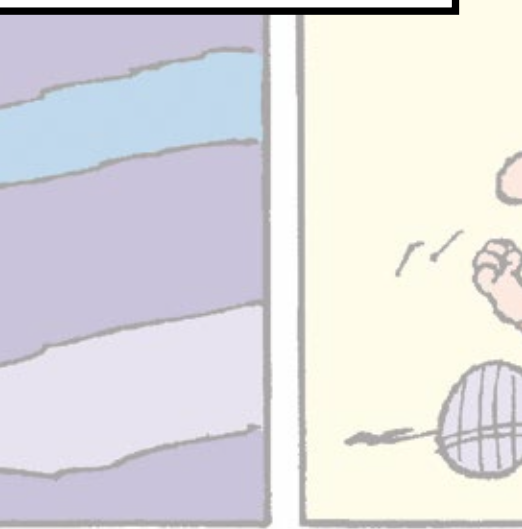
Media Sponsor
Quad-City Times

Free Admission July!

Thanks to the incredible generosity of Cal and Jill Werner, we were able to welcome almost 13,000 visitors through our doors during the month of July!

"All children are peanuts. They're delightful, funny, irresistible, and wonderfully unpredictable."

Charles M. Schulz



BARON !!
OUR P...

ART AND ACTIVISM AT TOUGALOO COLLEGE

December 8, 2023 – January 14, 2024

Art and Activism at Tougaloo College traced the history of this distinctive collection at the intersection of modern art, education, and social justice. Tougaloo College, a small liberal arts college located north of Jackson, Mississippi, was a center for vanguard European and American art shaped by interracial collaboration and the pursuit of civil rights. The exhibition included a stunning array of paintings, prints, and textiles by groundbreaking artists, such as Romare Bearden, Jacob Lawrence, and Elizabeth Catlett.

Art and Activism at Tougaloo College is organized by the American Federation of Arts and Tougaloo College. Major support for the national tour and exhibition catalogue is provided by the Robert Lehman Foundation, Inc., Henry Luce Foundation, the Mellon Foundation, and the Terra Foundation for American Art. Additional support for the catalogue is provided by Pass Christian Books, Elizabeth “Buffy” Easton, Sarah VanAnden, Julie McGee, and Tori and Marques Phillips.

PRESENTATION AT THE FIGGE

Contributing Sponsors

Carolyn Levine & Leonard Kallio Trust
Carolyn and Joseph Martin
Doris & Victor Day Foundation



Media Sponsor

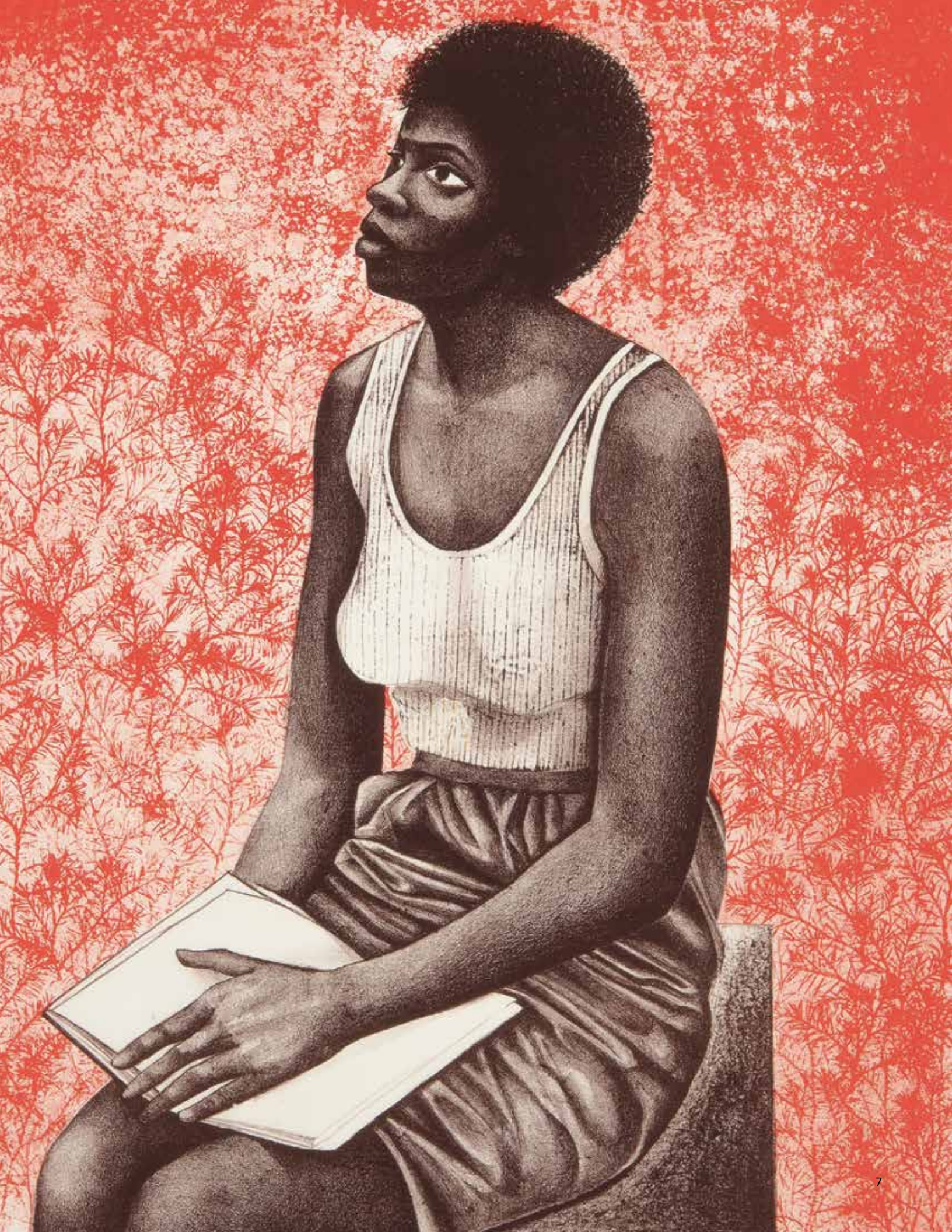
Quad-City Times



Empowerment Echoed

In collaboration with Together Making a Better Community at the Lincoln Resource Center, the Figge hosted a series of Art Responses presented by community leaders in response to the exhibition *Art and Activism at Tougaloo College*. This free public program featured spoken word performances, dance performances, a fashion show, and a Gospel Choir.

Elizabeth Catlett, American, 1919-2012, *Red Leaves* (detail), 1978, color lithograph, Tougaloo College, Gift of Mrs. Catlett Mora, 1986.002, © 2022 Mora-Family.



DAY OF THE DEAD: REMEMBER, HONOR, CELEBRATE

September 16, 2023 – December 3, 2024

Acknowledging the importance and strength of living heritage passed through generations, *Day of the Dead* celebrated and remembered the lives of loved ones lost through collective traditions, art-making, and story-telling. Exhibition highlights included altar displays in both the Gildehaus Gallery and the Mary Waterman Gildehaus Community Gallery, a mobile audio tour, community-shared stories and photos, Mariachi instruments (provided by West Music), and bilingual didactics. New artworks included a seven-foot hummingbird and a Catrina, created by local artisans Victor and Martha Yesenia Granados.

Hosted in Partnership with
LULAC Council 10
Ascentra Credit Union
Hola America

Sponsored by
MidAmerican Energy
Company

Day of the Dead Family Fiesta

Our Family Fiesta welcomed over 1,200 guests and showcased traditional dancing by Quad City Ballet Folklorico and Danza Azteca Asunción, foods like pan de muerto, tamales and beans, and crafts, including molded sugar skulls.







ADDITIONAL EXHIBITIONS

BEYOND THE CLASSROOM

May 30, 2023 – September 7, 2023

CONTRIBUTING SPONSORS: Bill and Chris Gallin

A TIME FOR PRIDE: THE FACES OF CLOCK

June 10, 2023 – December 31, 2023

EDOUARD DUVAL-CARRIÉ: ENDLESS FLIGHT

June 10, 2023 – September 17, 2023

SUPPORTING SPONSORS: Brian and Diana Lovett

CONTRIBUTING SPONSOR: Carolyn Levine & Leonard Kallio Trust

ANSEL ADAMS, THE SIERRA CLUB, AND THE MAKING OF A LANDSCAPE ICON

June 17, 2023 – August 27, 2023

SUPPORTING SPONSORS: Eddie Brian & Caroline Pasierb

CONTRIBUTING SPONSORS: Hunt and Diane Harris, Sears Seating, Carolyn Levine & Leonard Kallio Trust

IOWA NIGHT SKIES: PHOTOGRAPHS BY JOHNNY BRIAN

June 17, 2023 – September 3, 2023

CONTRIBUTING SPONSOR: The Joyce & Tony Singh Family Foundation

CHOOSE YOUR OWN MUSEUM ADVENTURE

June 17, 2023 – September 3, 2023

SPONSORS: Carolyn and Joe Martin

QUANTA OF SPACE: THE BOSOM SCULPTURE OF IBRAM LASSAW

September 9, 2023 – December 3, 2023

CONTRIBUTING SPONSORS: Wynne and David Schafer, Expression Jewelers Program

SPONSOR: Jewish Federation of the Quad Cities

ZIMOUN

September 23, 2023 – February 4, 2024

PREMIER SPONSORS: Shaun and Vicki Graves

SUPPORTING SPONSORS: SSAB Iowa, The Current Iowa

CONTRIBUTING SPONSOR: Xenotronics Company

STUDIO SCHOOL SHOWCASE

December 8, 2023 – January 14, 2024

CONTRIBUTING SPONSOR: Nikulski Financial, Inc.

PETER XIAO: A ROOM THAT ONE IS IN (AND ALL THINGS IN IT)

December 9, 2023 – June 16, 2024

CONTRIBUTING SPONSOR: Dean Christensen

SUPPORTED BY: Quad City Arts, through the Art Dollars re-granting program, supported by the Illinois Arts Council Agency and the Hubbell-Waterman Foundation

TRADITION INTERRUPTED

December 16, 2023 – March 31, 2024

CONTRIBUTING SPONSORS: Judie and Ross Lance

BODY MOVIN PHOTOGRAPHY IN MOTION

December 30, 2023 – February 11, 2024

YOUNG ARTISTS AT THE FIGGE

January 27, 2024 – June 2, 2024

SPONSORS: Geneseo | The Geneseo Foundation; Moline-Coal Valley | Tom & Brooke Terronez; Pleasant Valley | GreenState Credit Union; Muscatine | Kent Corporation; Bettendorf | GreenState Credit Union; North Scott | William & Lee Kessinger; Davenport | Jane Magunsson; Rock Island-Milan | Mark & Deborah Schwiebert

43RD ROCK ISLAND ART GUILD FINE ARTS EXHIBITION

February 17, 2024 – June 2, 2024

SPONSOR: Rock Island Art Guild

SCULPTURE GARDEN

April 16, 2024 – June 23, 2024

CONTRIBUTING SPONSORS: Kay K Runge, KK Runge Associates, TBK Bank

MEDIA SPONSOR: Quad Cities Regional Business Journal

ART BRIDGES – PARTNER LOAN NETWORK

February 10, 2024 – January 4, 2026

SPONSOR: Art Bridges Foundation

ILLUMINATED MANUSCRIPTS FROM THE FIGGE COLLECTION

May 18, 2024 – August 11, 2024

MEDIA SPONSOR: WVIK | NPR

RECKONINGS AND RECONSTRUCTIONS: SOUTHERN PHOTOGRAPHY FROM THE DO GOOD FUND

June 15, 2024 – September 8, 2024

SUPPORTING SPONSOR: The Brian Pasierb Family Foundation

CONTRIBUTING SPONSOR: Carolyn Levine & Leonard Kallio Trust

MEDIA SPONSOR: KLJB | FOX 18

Ansel Adams (American, 1902-1984), *Winter Storm* (detail), 1940, Silver gelatin print, 7 3/8 x 9 inches, Collection of Andrea Barton, L.2016.8.9LTL

ACQUISITIONS

The Figge Art Museum continues to grow its collection each year through generous gifts and carefully selected acquisitions. This year, the museum received 256 donated artworks and purchased four remarkable artworks by artists Nicola Hicks, George Olson, Mia Feuer, and Aernout Overbeeke.

Generosity plays a vital role in expanding the museum's collection, allowing it to grow in scope and significance.

Among the many generous gifts to the Figge this year, one stands out as being especially memorable: The Lewis Collection, donated by Dr. Randy and Linda Lewis of Davenport, Iowa. This gift of 44 pieces of modern and contemporary art, valued at \$14 million, fills crucial gaps in the museum's collection, allowing the museum to present a more comprehensive narrative of art history. The Lewis Collection features works by celebrated artists, such as Marsden Hartley, Helen Frankenthaler, Alice Neel, Milton Avery, and many others.

BELOW | Pauline Palmer (American, 1867-1938), *Along the Path (The Garden)*, circa 1910, oil on canvas, 32 x 26 1/4 inches, Friends of Art Acquisition Fund, 2024.8



ABOVE | Nicola Hicks (British, born 1960), *Emperor's Daughter*, n.d., bronze, 53 x 26 x 60 inches, Friends of Art Acquisition Fund with support from Linda and Randy Lewis, 2023.26, © Nicola Hicks

RIGHT | Friedel Dzubas (American, 1915-1994), *Antipode*, 1980, acrylic on canvas, 40 x 40 inches, Gift of Linda and J. Randolph Lewis, 2024.31.1, © Friedel Dzubas





SELECTED PROGRAMS & PROJECTS

Big Picture in the House

Each July, the Figge hosts Big Picture in the House, a free program by Figge outreach educators. Offering morning and afternoon sessions, the program provides themed talks and art activities inspired by the museum’s summer exhibitions.

Break the Silence

Thanks to funding from the Art Bridges Foundation, musical instruments, like chimes, bongos, and rain sticks, have been placed in the galleries, encouraging visitors to interact, express emotions and “break the silence” through sound.

CAA Partnership

The Figge partners with Davenport’s Creative Arts Academy (CAA) to engage 7th and 8th grade students in quarterly art education sessions, culminating in a student-created art installation, inspired by a work in our collection and on view in the Learn to Look Gallery.

Community Outreach

The museum’s Big Picture outreach program reaches thousands annually, providing lessons, projects, and resources at schools and events, including at the Spring Forward Learning Center, Project Renewal, Humility Shelter, Juneteenth Festival, and more!

Docent Class of 2023-2024

The museum welcomed its first new docent class since before the pandemic. After a 12-week course, docents hosted the Art Cart, shadowed tours in Winter, and began leading tours independently in Spring.

ELL Partnerships

Museum educators welcome refugees, students, and new citizens from organizations, like Tapestry Farms and Black Hawk College, helping them practice English, share cultural stories, and create personal connections with the Figge’s collection.





Girls on Fire

The Figge proudly hosted the *Love Girls Magazine* event, welcoming 150 teen girls for a free day of empowerment, storytelling, and skill-building focused on girl-power, support, and learning in a conference-style setting.

River Current Tours

Each year, the museum hosts all 982 fifth graders from Davenport Community Schools for a special tour, where students learn the museum’s history, explore art, sketch, complete scavenger hunts, and handle real artist tools.

Sculpture Sundays

Thanks to generous funding from the Art Bridges Foundation, the museum hosted 12 free Sculpture Sunday events, showcasing David Smith’s artwork on loan. Each event featured a local artist discussing gallery pieces, followed by hands-on art-making in the studios.

Studio School Showcase

These exhibitions in the Mary Waterman Gildehaus Community Gallery provide an opportunity to celebrate the talents and hard work of the students enrolled in one of our many art classes or programs at the Figge!

Tricks & Treats

October saw the first annual Tricks & Treats at the Figge, where over 1,000 costumed families enjoyed gallery trick-or-treating, crafts, snacks, photo ops, and candy-to-go before Davenport’s Halloween Parade.

Viking Tours

With Viking Cruise Lines’ new Mississippi River excursions, the museum hosted 11 international groups. Visitors enjoyed docent-led tours, exclusive Grant Wood ephemera, local cocktails in the café, and were impressed by the museum’s caliber in Iowa.



Connecting with Clock, Inc.

Over the past three years, Big Picture Outreach has partnered with Clock, Inc., a local organization supporting LGBTQ+ youth, to bring art and self-expression to high school group sessions. This vibrant collaboration was inspired by the Figge's exhibition *A Time for Pride: The Many Faces of Clock* exhibition in the Learn to Look Gallery, which launched during Pride Month 2023 and was extended due to its popularity. The installation featured student art, creative stories, and works by renowned LGBTQ+ artists Keith Haring and Tseng Kwong Chi. Museum guests were invited to reflect and engage in a meaningful community conversation.

Featured Community Education Programs



Learning and Engagement Focus: David Smith

Art Bridges Foundation funding allowed us to activate unused space to create a cozy learning nook featuring David Smith's *March Sentinel*, offering biographical information, quotes, books, and touchable tools. It's now a favorite spot!



Cultivating Mindfulness

The Figge partners with Becky Nakashima Brooke to offer monthly wellness classes in the galleries, combining meditation, qigong, and sound healing. These sessions have inspired additional wellness classes and influenced exhibition labels and gallery activities.



Between the Stacks: Big Picture at the Libraries

In partnership with local public libraries, the Figge offers free outreach sessions for families. These programs include supplies and encourage museum visits. Area libraries also offer free family passes to the Figge year-round.

Second Saturdays

Access for All at the Figge!



The Figge Art Museum launched its first FREE Second Saturday on December 9, 2023, thanks to a generous grant from Art Bridges Foundation's Access for All initiative. Second Saturdays provide our Quad Cities community with free access to exhibitions and diverse educational programming, including dance, music, spoken word, art-making, community conversations, films, and more.

Regular activities include yoga, sketchbook sessions, art tours, mindfulness activities and rotating live performances. During *Tradition Interrupted*, we hosted a "Community Table," where global food tastings sparked meaningful conversations on evolving traditions, bringing together museum members, first-time visitors, refugees, and staff to share stories, explore new flavors, and connect across cultures.

These free Second Saturdays continue to foster inclusivity, creativity, and connection for all ages and backgrounds.

Second Saturdays are made possible by a generous grant from the Art Bridges Foundation Nationwide Access for All initiative.



ACCESS
FOR ALL

Community Partners

- Alternating Currents Festival
- American Federation of Arts
- Art Bridges Foundation
- Art Educators of Iowa
- Ascentra Credit Union
- Augustana College
- Azubuike African American Council for the Arts
- Beaux Arts Fair
- Bethel Wesley Community Learning and Resource Center ELL Program
- Bettendorf Public Library
- Bettendorf Community School District
- Bettendorf STEAM Fair
- Big Brothers Big Sisters of the Mississippi Valley
- Birmingham Museum of Art
- Black Hawk College
- Butterworth Center and Deere-Wiman House
- Center for Active Seniors, Inc. (CASI)
- City of Davenport
- Clock, Inc.
- Common Chord
- Creative Arts Academy
- Crystal Bridges Museum of American Art
- Crosstown Senior Center
- Davenport Breakfast Lions Club
- Davenport Junior Theatre
- Davenport Public Library
- Downtown Davenport Partnership
- Eastern Iowa Community Colleges
- Friends of MLK
- Geneseo Public Library District
- Genesis Health System
- German American Heritage Center
- Girl Scouts of Eastern Iowa and Western Illinois
- Hand in Hand
- High Roads School of the Quad Cities
- Hola America & Hola Iowa
- Humility Homes and Services
- Iman Consulting
- Individual Advocacy Center
- Jewish Federation of the Quad Cities
- Joslyn Art Museum
- Junior Achievement
- Knox College
- LeClaire Community Library
- LOVE Girls Magazine
- TMBC at the Lincoln Resource Center
- LULAC Council 10
- Martin Luther King Jr. Community Center
- Mercado on Fifth
- Midwest Writing Center
- Milwaukee Institute of Art and Design
- Minneapolis College of Art and Design
- Mississippi Valley Quilters Guild
- Moline Public Library
- Moline School District
- Monmouth College
- Nahant Marsh
- NAMI National Alliance on Mental Illness – Greater Mississippi Valley
- National Adoption Day Scott County
- Orion Community School District
- PEO Chapter KT Moline
- Pleasant Valley School District
- Project Renewal
- Putnam Museum & Science Center
- Quad Cities Community Foundation
- Quad Cities Cultural Trust
- Quad Cities FIRST Lego League
- Quad Cities Veterans Center
- Quad City Arts
- Quad City Botanical Center
- Quad City Plus 55 Club
- QC Pride
- Quad City Symphony Orchestra
- River Action
- River Valley District Library
- Riverdale School District
- Robert R. Jones Public Library
- Rock Island Milan School District
- Rock Island Public Library
- Safer Foundation
- Scott County Youth Justice and Rehabilitation Center
- Scott County Public Library Systems
- Second Baptist Church of Rock Island
- Sherrard Community School District
- Shore Excursions of America
- Spring Forward Learning Center
- St. Ambrose University
- St. Mark's Lutheran Church
- Tapestry Farms
- The Art Institute of Chicago
- The Center
- The Estate of David Smith
- The Project of the Quad Cities
- The Summit Senior Center
- University of Iowa Dance Company
- University of Iowa Stanley Museum of Art
- University of Northern Iowa
- Viking Cruise Line
- Visit Quad Cities
- Warner Foundation
- Western Illinois University Museum Studies Graduate Program
- Western Illinois University Master of Counseling Program
- World Relief Family Literacy Program
- Young Lions Roar

ART EDUCATION BY THE NUMBERS

The Big Picture Outreach Program reached **18,419** students (and teachers)!

1,320 K-12 grade students had their art displayed in the Mary Waterman Gildehaus Community Gallery.

Elementary students used **4,200** pieces of model magic air-dry clay during outreach and museum visits.

5,326 students enrolled in Studio School classes this year.

Figge Family Programs served **5,467** museum visitors.

982 5th grade students sketched, learned Figge history, and talked about art during tours!

Schools Served

Adams Elementary	Garfield Elementary	Mulberry Elementary	Walcott Elementary
Alan Shepard Elementary	Grant Elementary	Neil Armstrong Elementary (Bettendorf)	Washington Elementary
Amboy High School	Grant Wood Elementary	Neil Armstrong Elementary (Eldridge)	Wells Elementary
Andalusia Elementary	Harrison Elementary	North High School	West High School
Assumption High School	Hayes Elementary	Orion Middle School	Williams Intermediate
Bettendorf High School	Herbert Hoover Elementary	Paul Norton Elementary	Wilson Elementary
Blue Grass Elementary	Hillcrest Elementary	Pleasant Valley High School	Southwest Elementary
Bowlesburg Elementary	Jackson Elementary	Ridgewood Elementary (East Moline)	Northside Elementary
Buchanan Elementary	Jefferson Elementary (Davenport)	Ridgewood Elementary (Rock Island)	Bicentennial Elementary
Buffalo Elementary	Jefferson Elementary (Muscatine)	Riverdale Elementary	Butterworth Elementary
Cambridge High School	John Glenn Elementary	Riverdale High School	Franklin Elementary
Central High School	Longfellow Elementary	Rivermont Collegiate	Hamilton Elementary
Creative Arts Academy (at Sudlow)	Madison Elementary (Davenport)	Rock Island Academy	Jane Addams Elementary
Davenport Catholic School	Madison Elementary (Muscatine)	Rock Island Center for Math and Science	Lincoln-Irving Elementary
Denkmann Elementary	Mark Twain Elementary	Rock Island High School	Logan Elementary
DeWitt Middle School	Matherville Intermediate	Rockridge High School	Roosevelt Elementary
Earl Hanson Elementary	McKinley Elementary (Davenport)	Sherrard Elementary School	Washington Elementary
Ed White Elementary	McKinley Elementary (Muscatine)	Smart Intermediate	Willard Elementary
Edison Junior High School	Mid City High School	Sudlow Intermediate	Bridgeview Elementary
Eisenhower Elementary	Moline High School	Thomas Jefferson Elementary	Cody Elementary
Erie High School	Monroe Elementary	Truman Elementary	Forest Grove Elementary
Eugene Field Elementary		Virgil Grissom Elementary	Hopewell Elementary
Filmore Elementary			Pleasant View Elementary
Frances Willard Elementary			Riverdale Heights Elementary
Franklin Elementary			St. Joseph's Catholic School
Fulton High School			Whiteside County Homeschool Co-Op

IMMERSIVE ART EDUCATION



“It is important to provide a safe, enriching place for students to create and explore through art, and to learn how artmaking is an effective tool in addressing emotions. We have seen students blossom when they are in this space!”

*Laura Wriedt,
Outreach and Community
Engagement Coordinator*

The Big Picture Immersive Outreach program started as a response to serve the social emotional needs of at-risk high school students. With the generous support of the Windgate Foundation, the program began by simply taking mindful art lessons into two social life skills classrooms at Rock Island High School, demonstrating how art can be used as an effective way for students to sort through stress and navigate challenging emotional issues. Now in its fourth year, this program has grown to expand into a permanent classroom space that serves four social life skills classes, including one for special needs students, and also serves as a space for social workers to work in a small group setting with students. In addition to the on-site program, students are brought to the Figge monthly to connect with exhibitions and behind-the-scenes art opportunities.

“As a non-artist it puts you in the artist environment and that mistakes are okay and even if you don’t like your art others will. Overall it really pushes art as a good way to relieve stress and makes you feel better about yourself.”

Student Quote



THIS YEAR IN DEVELOPMENT



Art at Heart Gala Our most significant fundraiser of the year brought together more than 200 dedicated supporters for a whimsical night inspired by the exhibition *Walter Wick: Hidden Wonders!* The evening dazzled with colorful decor and lively bidding on unique artworks and exclusive experiences. All proceeds from the evening support the Figge’s arts and education outreach programs throughout the Quad Cities. The overwhelming generosity of our attendees made this event a true celebration of the power of art to enrich lives and communities on both sides of the river.



Art Off the Wall What’s better than brunch? Brunch with mimosas and an art auction, of course! Over 150 art lovers turned up for a Sunday packed with delicious brunch bites, free-flowing bubbly, and over 100 art pieces up for grabs. With more than a quarter of the works donated by local artists, guests were spoiled for choice—and things got a little competitive! The joy of art, bidding, and bubbly made it a memorable day for all.



An Evening with Leo Villareal Members of our community were treated to an exclusive preview of *Evanescent Field*, by world-renowned artist Leo Villareal. Set to become the largest public artwork in the state of Iowa, *Evanescent Field* will transform the Figge’s iconic glass building into a beacon of light and creativity. This stunning installation will not only enhance the beauty of the riverfront but also provide endless cultural, educational, and recreational opportunities for the community.



Art of the Brew The Figge’s 2nd annual Art of the Brew event was an unforgettable night of craft beer, music, and fun! Nearly 200 enthusiastic guests sampled unlimited pours from some of the finest breweries the Quad Cities has to offer. With 11 local breweries on tap, the museum came alive with music, conversations, and a sense of community. Guests also had a blast spinning the Wheel of Mystery Beer to build their own surprise six-packs, making it a fun-filled night for all. The energy was electric, the brews were top-notch, and we can’t wait for next year!



ART AT HEART GALA



ART OFF THE WALL



AN EVENING WITH LEO VILLAREAL



ART OF THE BREW



TRIVIA NIGHT AT THE FIGGE



RED WHITE & BOOM! PARTY



MUSEUM GIVING

Thank you to these individuals, families, foundations, government funders, and businesses for their contributions received July 1, 2023 through June 30, 2024.

CONSERVATOR \$50,000+

John Deere Classic - Birdies for Charity
Ruhl & Ruhl Realtors

VISIONARY \$25,000+

Patricia and Greg Bereskin
Susan Quail
Warner Foundation
John Gardner and Catherine Weideman
William & Marie Figge Wise Foundation

PHILANTHROPIST \$10,000+

Patricia Figge
Thomas K. and Jennifer Figge
Shaun and Victoria Graves
Joyce and Tony Singh Family
Foundation, Inc.
Caroline Kimple
Brian J. and Elizabeth Lemek
J. Randolph and Linda Lewis
Brian & Diana Lovett
Robert and Janet McCabe
Susan Perry and Stanley Goodyear
Chris and Mary Rayburn
Wynne Schafer
The Singh Group at Merrill Lynch
Thomas O. and Margaret Nobis
Foundation Fund
C.R. and Nancy von Maur
Cal and Jill Werner
Mark and Barbara Zimmerman

ADVOCATE \$7,500+

Eddie Brian and Caroline Pasierb
Kay Hall
Judie Lance
Joseph and Carolyn Martin
MidAmerican Energy Company
Mark and Deborah Schwiebert
Susan and Richard Vermeer
Steve and Ann Wagner

AMBASSADOR \$5,000+

Beaux Arts Fund Committee
BITCO Insurance Companies
Rick Bowers and Ahn Spence
Thomas J. Brawley
William and Dixie Burress
John and Nancy Danico
Don Doucette and Lynn Drazinski
Estes Construction
John and Lisa Figge
Michael J. and Jennifer Figge
Patricia Figge Glowacki
Janice Hartwig
Peg and David Iglehart
Johnson Watkins Family Foundation
Ann Koski
Todd and Mary Beth Kunau
Carolyn Levine
Mary Lind
Jane Magnusson
Daniel and Jennifer Molyneaux
Constance Parkinson
Steven and Bonnie Powell

John Power and Mary Figge Power
Linda Schneider
Aleeza Singh and Kyle Ekberg
Sam Skorepa and Abbey Furlong
Tom and Brooke Terronez
Terrostar/Medix Dental
Eric and Barb Trimble
Tyson Foods
Xenotronics Company

PATRON \$2,500+

Nandita and Suresh Alla
Don and Dee Bruemmer
Andrew and Debi Butler
Catherine's Boutique
Continental Cement Company
Jack and Carmen Darland
Patrick and Kristena Downing
Willie Ellis
Expressions Jewelers
Bill and Christine Gallin
GreenState Credit Union
Hunt* and Diane Harris
Connie Heckert
Jane and Kevin Koski
Mary Lou Kotecki, Ph.D.
Kenneth Koupal and Thomas Kersting
Marion Meginnis and Jack Haberman
Delia and Dave Meier
Mills Chevrolet
Modern Woodmen of America
Bernadette Murphy
Nikulski Financial, Inc
Northwest Bank & Trust Company
Oak Street Health
Vickie Palmer
Pepsi Cola Bottling Of Davenport
Alan and Julie Renken
Kay Kretschmar Runge
Jim and Michelle Russell
SSAB Iowa Inc
Sears Seating
Tony and Joyce Singh
Steve Sinner
John and Diane Slover, Jr.
TBK Bank
Paul and Donna VanDuyne
Aaron Wetzel
Dana and Mark Wilkinson

ARTIST \$1,250+

Lanny and Erika Adamson
Anderson, Lower, Whitlow, P.C.
Ann Austin
Bill Barnes
Mike and Barb Bleedorn
Nancy Chapman
Dean Christensen
Richard Clewell and Christine Ameling
Joseph D'Souza
Doris and Victor Day Foundation
Eaton-Cobham Mission Systems
Eye Surgeons Associates, PC
Geneseo Foundation
Bettina Getz

Marie-Catherine and Pierre Guyot
Tom Harper
James R. Havercamp
Dave and Connie Herrell
John C. Higgins
E.R.Hofmann*
David and Ashlee Holst
P. Charles Horan
Valerie Horvat and Patrick Comparin
Allen Hunt
Kent Corporation
William and Lee Kessinger
George and Charlotte Koenigsaecker
Norma Kurth
Kiwanis Club of Davenport
Kathleen Medhus
Regina and Steve Nelson
Northwestern Mutual Wealth
Management Company
John Parkhurst
Kent and Judi Pilcher
Samuel Pilcher
Theodore Priester and Emilie Giguere
Matt and Tracy Schwind
Rick and Nancy Seidler
Dan and Gayna Stadelman
Sandra Stoit
Janelle Swanberg and Donald Fish
Annika Tunberg
Jon and Michelle Tunberg
Rusty and Doris Unterzuber
Zimmerman Honda

STEWARD \$500+

American Bank & Trust Co.
Barry Anderson
James and Dianne Andrews
Anonymous
Anonymous
Anonymous
Paula Arnell and Vincent Liu
Assured Partners
Nancy Bach
Bart and Denise Baker
Gerald and Patricia Barenthin
Mark and Rita Bawden
William and Judy Benevento
Eileen Benson
Robert and Suzanne Benson
Fred and Shirley Berger
Bill & Melinda Gates Foundation
James Billman
Ellen Boeye
Norm and Linda Bower
Caitlin and Nic Brandt
George and Mary Britton
Steven Burke and Darcy Anderson
Bush, Motto, Creen, Koury &
Halligan, P.L.C.
Andy and April Buske
Karen Cathelyn
Joseph Chonto
Kent and Nancy Cornish
Dylan Cross
Neil and Karen Dahlstrom

Michele and H.J. Dane
Dick Taber Estate Sales
Leslie Dupree and Ben Beydler
Elizabeth and Keith Ehrecke
Stephen Figge
Manfred and Sandy Fritz
Lee and Lisa Gaston
Maureen Golinvaux
Green Buick GMC and
Green Family Hyundai
William and Marvel Green
Nidal and Sana Harb
Lynne Harbison
Michelle Hargrave
Thomas Harper
William and Ruth Anne Hartman
Kirk and Luann Haydon
Eileen and Joe Hochreiter
IH Mississippi Valley Credit Union
Bill and Deb Irey
J.F. Ahern Company
Jewish Federation of the Quad Cities
John J Quail Foundation
Patricia Jean Johnson
Mary and Matthew Jones
K&K True Value Hardware
Helene and Mitchell Kamon
Danae Krutzfeldt
Meyer Lehman
Robert Lewis and Steve Flack
Robert and Barbara Lipnick
Curtis Lundy
Lynn Quinn NonEndowed
Donor Advised Fund
Marjorie Magers
Alan Marin
Marilyn and Mark Marmorine
John and Michele Martin
Sylvia Martin
Gary and Jean Medd
Bonnie and Gerald Moeller
Melissa and Stephen Mohr
Margaret Morse and Michael Batz
Todd Nelson
Brett Nesseler
Samuel and Elisabeth Norwood
Jacqueline O'Donnell
Priscilla Parkhurst
Dolores Payette Kustom
Don and Daryl Ann Pedersen
Woody Perkins
Glenn Peterson
Jeff and Jana Peterson
Quad Cities Chamber of Commerce,
Downtown Division
Quad-City Times
Janet and Paul Raffert
Rock Island Art Guild
Ed Rogalski
Royal Neighbors of America
Ian and Sara Russell
Siv Brit Saetre and James Entwistle, Jr.
Dan and Marysue Salmon
Dan Sarasin and Amanda Coletour
Susan Sharar and Leo Schubert

Lacey and Susan Skorepa
 Charles and Deanna Slack
 David Smith and Dale Slonneger-Smith
 Debby and Hugh Stafford
 Marge Stratton
 Cristy Tackett-Hunt
 Senator Maggie Tinsman
 Scott and Beth Tinsman, Jr.
 Larry and Jane Tschappat
 John and Kathleen* Tritt
 Twin State, Inc.
 Douglas and Jean Vickstrom
 Jane Vieth
 Rick Wachel
 Tom and Maria Waterman
 WaterMark Corners,
 a Trimble Pointe Company
 Marvin and Carol Webb
 Whitey's Ice Cream
 Heather Winn
 William and Patricia Wohlford
 Humphrey Wong and Linda Tong
 Dale and Marie Ziegler

INVESTOR \$250+

Christine Agy
 Carol Albrecht
 Marla and Steve Andich
 ASWAS Inc.
 Stephanie Barrick and
 Geoffrey Campbell
 Robert and Priscilla Bass
 Amy Baum
 J. Michael and Barbara Bauswell
 Leslie and Sara Bell
 Luis Bencomo
 The Bergren Family
 Joseph Bergstrom and Shawna Duske
 BITCO Insurance Companies
 Thomas and Elaine Bridge
 Peter and Lisa Britt
 Brian and Barbara Cady
 Roland Caldwell
 Nicole and Lee Carkner
 Mark Carlson
 James and Lisa Carstens
 Carl and Barbara Cartwright
 Joseph and Shelley Chambers
 Frank and Carol Cincola
 Gene and Mollie Conrad
 Susan Dale
 Alan and Dawn Dickey
 Mary and Michael Drymiller
 Aric and Tina Eckhardt
 Carol and Clark Ehlers
 Loryann Eis
 Robert Elfline
 Kelsey Fortner
 Susan and David Gallagher
 Denise Garrett and Jim Niedelman
 Martha Gaulrapp
 Peter Gierke and France Many
 Benjamin and Haley Gladkin
 Rex and Susan Grove
 Catherine Halligan

Jan Harper
 Harold and Becky Hartman
 Nancy and William Hass
 Debra Hegwein
 Gene Hellige and Loren Shaw Hellige
 Susan Hippler and Roy Springfield
 Aubree Holland
 Harry Hoyt, Jr.
 Steve and Mary Ellen Hunter
 Steve and Maggie Jackson
 Todd Jackson
 Maitreyi Janarthanan and
 Tracy Finnegan
 Lois Jecklin
 John and Patty Johannesen
 John Deere Foundation
 Joshua Johnson
 Mr. and Mrs. Michael Johnson
 Matthew Katz and Stephen Sokany
 Aaron and Dorole King
 John and Jane Klinkner
 Frank Klipsch
 Kent and Cheryl Kolwey
 Barbara Korbek
 Carole Kucharo
 Kevin and Anne Kurth
 Gary and Gerda Lane
 Barbara Langley
 Catherine and William Litwinow
 Holly and Joseph Loussaert
 Barbara Manlove
 Ron and Cindy May
 Kathy McCoy
 William and Peggy McCullough
 Paul and Sue McDevitt
 Susan and Michael McPeters
 Craig Meincke
 John Menninger
 Sharon Michaelsen
 Harry and Georgia Mihm
 Miller Trucking & Excavating
 Roger and Kathleen Miller
 Robert and Beverly Mitchum
 Christopher and Leanna Moen
 Norman and Janet Moline
 Kimberly and Tim Montgomery
 Kathy and Dan Moore
 Steve Musson and Dori James
 Lois Nichols
 Robert and Marilyn Noe
 Leslie O'Ryan
 Olympus Properties
 David and Paula Pratt
 Alta Price
 Kristin Quinn and Anthony Catalfano
 The Ratkiewicz Family
 Mary Regan
 Jerome and Carole Reid
 Republic Companies
 Connie Retherford
 Ron and Amy Riggins
 Pamela Roeder
 Caroline Ruhl and John Thompson
 Jennifer Saintfort
 David and Ginny Samuelson

Ronald Schaecher
 Blake Schaeffer
 Anthony and Helen Schiltz
 Samuel and Nancy Schold
 Peter and Christine Sharis
 Ron and Becky Sipes
 Tom Spitzfaden and Robin Smith
 Donald Staub
 Amy and Fritz Swearingen
 Annette Tephly and Matt Rybarczyk
 The Caterpillar Foundation
 John Thorson and Zaiga Minka Thorson
 Karla and Daryl van Keulen
 Bob Vergeyle
 Sheila Volrath
 Nikhil and Archana Wagle
 Patricia Walkup
 James Walters
 Mike and Gail Walton
 Christopher and Kim Welch
 Diane and Mike Whiteman
 Jolene Whittemore

BENEFACTOR \$150+

Donald and Marilyn Achelpohl
 Kathy and Terry Aden
 Amanda Ahlstrand and Gareth Rees
 Brian Allen and Sarah Hepner
 Kenton Allen and
 Ghada Hamdan-Allen
 Linda Anderson
 Anonymous
 Jennifer Ashby
 Karen Beetham and Palmer Steward
 John and Lynn Behrends
 Thomas Bengtson and Kevin Carney
 John and Patti Berge
 Allison Bettine and Hailey Franzen
 Bob and Julie Blew
 Harlow and Lila Blum
 Ingrid Bogdanowicz
 Chidananda Boligalade
 Elizabeth Bouslough
 Betsy Brandsgard
 Ryan Brant and Rebecca Zender
 Suzanne and James Braswell
 Karen Brooke
 Tom and Jennifer Brooke
 Robert and Nora Brown
 Sarah and Tom Budan
 Pleshette Butler
 William Carter
 Sara Carton
 Cynthia Cavanagh and
 Michael Fitzgerald
 David Cinotto
 Jacob Clark
 Matty Clark
 Teresa and Steve Coder
 Wayne and Mary Coker
 Anne Colville and Steve Morrison
 Bob and Christina Conklin
 Chris and Connie Connolly
 Shawna and David Corby
 Phillip Cray and Barbara Rudsell-Cray

Ezequiel and Luis Cuellar
 Daniel Dalessandro
 Aubree and Calvin Dane
 Susan and Scott Davis
 Barbara Davison
 Don and Nancy Dehner
 Richard Dienesch and Jane Cassidy
 Tony Dinger
 Slav and Christine Dokolasa
 Patty Dooley-Jones and Maggie Jones
 John and Carole Downing
 Shea Doyle and Hannah Morrell
 Maxine Duhm
 Chris Dunn and Elizabeth Russell
 Etycl Easter and Nancy Osborne
 Craig and Jeannette Eckhardt
 Candace and Ronald Egger
 Cindy Elgatian
 Alice Elliott
 Michael Ellis and Thea Holmon-Ellis
 Mary Ann Engel
 Ann Ericson
 Thomas M. Fiedler and
 Thomas C. Taylor
 Wayne Finley and Joanna Kluever
 Penny and Michael Fitzpatrick
 Patrick and Jeanne Flynn
 Diane Foley
 Shirley and Gary Forret
 Carol Francis
 Joel and Diane Franken
 Calvin Fredrickson
 Pat and Tom Freiburger
 Lynn and Mary Friesth
 Margret Funk
 Rolando Gamino
 David and Rene Gellerman
 Robert and Mary Jo Godwin
 Rhonda Golden
 Regina and Jeffrey Goldstein
 Mary Grant
 Tina Grove
 Dale Haake and M.C. Lucas-Murillo
 Barbara and James Hahn
 Michael and Michelle Hahn
 Roger and Laurie Hakeman
 Jon Hamm
 Isabel Hansen
 Kathryn Harle
 Jeff and Barbara Havenner
 Karla and Karla Hawley
 Barbara Heikens
 Bob Heimer and Victoria Navarro
 Mary Heinzman
 Dale Hendricks and Alison McCrary
 Heidi and Kris Hernandez
 Lynn and Gary Hirsch
 William Homrighausen
 James and Carol Horstmann
 Michael and Louise Howcroft
 Gwen Hudson
 Michael and Hedy Hustedde
 Mary Kay and James Hymes
 Raphael Iaccarino and
 Barbara Maness

Steve and Mary Imming
 Gary and Nancy Ingelson
 Brian and Devon Irby
 Thomas Jackson and Joanne Stevens
 Chris and Dave Jagger
 Laura Jagger
 Brian Jennings
 Marianne Jensen
 Jerry and Judy Johansen
 Anne Johnson
 Michelle R and David Juehring
 Charlet and Alexander Key
 Lee and Julie Kimball
 Michael and Lenore Knock
 Wolf and Linnea Koch
 Georgie Koenig and Lloyd Kilmer
 Casey Krall
 Gary and Carol Kramer
 Dave and Cathie Lange
 Dan and Ruth Lee
 Marian Lee
 Craig Lennon and Kristen Young
 Linda Jane Wheelan – Survivor’s Trust
 Mary Ann Linden
 Rod Lord and Sandy Houston
 Jerry Lowe and Janet Brown-Lowe
 Mary Lujack
 Cynthia and Fred Lukasik
 Helen and Jeff Macalister
 Daniel Malachuk and
 Catherine Reinhardt
 Joan Marttila and Richard Gast
 Todd Massey
 Brian and Adhana McCarthy
 Ann McCluskey
 Nancy McConnell and Michael Swartz
 John McEvoy Jr and GERALYN McEvoy
 Jill McLaughlin
 Kathleen McLaughlin
 Teresa and James Mesich
 Aaron Miers
 Craig and Linda Miller
 Ann and Jerry Mohr
 Karen Moldt
 Daryl Ann Moore
 Anthony and Ann Morales
 Edwin and Chris Motto
 Mumford Family Foundation
 Kathleen Negaard
 William and Pat Nicholson
 Gail and Brian Nikulski
 Bruce Noah
 Gary and Nancy Nolan
 Don and Angela Normoyle
 Frank and Roxanne Nowinski
 Lauren Olson
 Erin and Bill Onions
 Carly Ott
 Cheryl Peck
 Leo and Renate Peck
 Daryl Penner
 James J. and Kathy S. Phelan
 Mary Pogue Riepe
 Stella Rangel and John Morgan
 Stephanie Raphael-Nakos
 Kellie Rech and Nickalaus Brown

Judy Redlinger
 John and Mariann Reese
 Randy Richmond and Audrey Brown
 Bill and Sylvia Roba
 Diana Robbins and Kevin Parker
 David and Kara Rohlf
 Paul and Karen Rohlf
 Dennis Rose
 Margaret Sands
 Claudia Scharf
 Martha and Timothy Schermer
 Tim Schiffer and John Cameron
 Kendall and Susan Schwartz
 Jim Schwarz and Arib Khan
 Michael and Kristen Sciarappa
 Laura Scott
 Chris Sederstrom
 Randi and Gary Segal
 Roberta Shadensack
 Lynn Sharp
 James and Elizabeth Shearouse
 Jerry and Julie Skalak
 Kirsten Smith
 Erin Snyder
 Eric Spickermann and Sarah Willie
 Helen Stahl
 George Staley
 Don and Rita Stanforth
 Scott Stange
 Jackie and Gene Staron
 David Staub
 Eilene Stephens
 Katie Styrt
 Lynn Summers
 Sharon Suss and Bill Smutz
 Kari Taber
 Nancy and Phil Tabor
 Jim and Stephanie Tansey
 Duane Thompson and David Lasky
 Kelly Thompson
 Martin Tinberg and Carol Branagan
 Gwen Tombergs and Dave Wayne
 Clayton and Sue Traver
 Kristine Tucker and David Hansen
 Charles and Joyce Urbain
 Angela and John Vaaler
 Kym and Jeff Vandygriff
 Deb Vanspeybroeck, Ph.D.
 William Vincent and Marie Kerbeshian
 Laura Vincent-Arnold and Eric Arnold
 Sara Volz
 Kathleen Vondran
 Margaret and Thomas Walsh
 Julie Walton
 Tom and Kelly Warner
 Matthew Welty
 Randy and Barbara Westerdale
 Donavon K. Weston and
 Kathleen Christensen-Weston
 Todd and Judy White
 Bette and Jeff Wigand
 John and Jarene Wilch
 Linda Wilkinson
 Lisa Williams and Brian Williams II
 Michelle Wolff and Derek Jones
 Joe and Angela Woodhouse

Brendan Young
 Jeffrey and Donna Young

GRANTS
\$100,000+

Art Bridges Foundation
 Quad Cities Cultural Trust
 Regional Development Authority
 The Bechtel Trusts

\$50,000+

Hubbell-Waterman Foundation
 Windgate Foundation

\$25,000+

Brand-Boeshaar Foundation Fund
 Scott County Regional Authority
 Warner Foundation

\$10,000+

Iowa Arts Council
 Bank of America - Museums on Us

\$5,000+

Grant W Brissman &
 Virginia M Brissman Foundation
 Kathryn J. Dinardo Trust Fund
 Western States Arts Federation
 GreenState Credit Union

\$2,500+

Moline Regional Community Foundation
 TEGNA Foundation
 Theisen’s Home, Farm, Auto Store

\$1,000+

Bettendorf Rotary Club
 Davenport Noon Optimists Club
 Rauch Family Foundation
 Rock Island Art Guild
 Rock Island Community Foundation
 Kiwanis Club of Davenport
 Prichard Family Charitable Trust
 Doris & Victor Day Foundation
 Geneseo Foundation

\$500+

Junior Board of Rock Island
 Downtown Davenport Partnership

INSTITUTIONAL MEMBERS

Augustana College
 Black Hawk College
 Eastern Iowa Community Colleges
 Palmer College
 St. Ambrose University

CHECK US OUT! MEMBERS

Bennett Public Library
 Bettendorf Public Library
 Cambridge Public Library District
 Cordova District Library
 Davenport Public Library
 East Moline Public Library
 Edwards River Public Library
 Geneseo Public Library
 Iowa City Public Library
 LeClaire Community Library
 Maquoketa Public Library
 Moline Public Library
 River Valley District Library
 Robert R Jones Public Library
 Rock Island Public Library
 Scott County Library System
 Sherrard Public Library
 Warren County Public Library District
 Waverly Public Library
 Western District Library

HONORARIUM

The Birth of Cyrus Dane Ekberg-Singh
 Anne Ney

Kay Hall’s Birthday

Grace Carver

Michelle Hargrave

Don and Dee Bruemmer
 William and Dixie Burress
 Neil and Karen Dahlstrom
 John and Nancy Danico
 Carol and Clark Ehlers
 Manfred and Sandy Fritz
 Bill and Chris Gallin
 John Gardner and
 Catherine Weideman
 Connie Heckert
 John Higgins
 Katie Kiley
 Kenneth Koupal and Thomas Kersting
 Ann Koski
 Kevin and Jane Koski
 Mary Lou Kotecki
 Judie Lance
 J. Randolph and Linda Lewis
 Brian and Diana Lovett
 Marion Meginnis and Jack Haberman
 Melissa and Stephen Mohr
 Lois Nichols
 Paul and Janet Rafferty
 Wynne Schafer
 Tracy and Matt Schwind
 Rick and Nancy Seidler
 Sam Skorepa and Abbey Furlong
 Annika Tunberg
 Amy Trimble & Dr. Joseph Urbaitis
 Nikhil and Archana Wagle
 Patricia Walkup

MEMORIALS

Patricia Dixon

Harold and Rosanne Krubsack

Dorothy Downing

Chris and Connie Connolly
Kirk and Cassie Downing
Patrick and Kristena Downing
Quint Easter and Nancy Osborne

Catherine Drury

J. Randolph and Linda Lewis

John Hall

John and Diane Slover, Jr.

John Huntington "Hunt" Harris II

Carmen and Jack Darland
Michelle Hargrave
J. Randolph and Linda Lewis
Mary Lou Kotecki, Ph.D.
Mary Lind
Mark and Deborah Schwiebert
Sara Volz

Edith "Tilis" Hofmann

Dr. William and Pam Hofmann
Mr. and Mrs. Mark Kilmer
Ellen Leeney and John Yang
J. Randolph and Linda Lewis
Michael and Susan Schreck

Justice Tom M. Lytton

Beverly Gillespie

Margaret "Margi" A Pajunen

Lynn Carlson

Peggy Pierce

Jon and Michelle Tunberg

Brent Sikkema

J. Randolph and Linda Lewis

John Stratton

Anonymous
Betty Auliff
Ezequiel and Luis Cuellar
Mr. Ronald Gusta
Thomas and Katherine Howard
Martha J. McLuckie
Ms. Marianne Milos
Robert and Patricia Roehm
Kirsten Smith
Ms. Marge Stratton
Sen. Maggie Tinsman

Katie Tritt

Anonymous
Julie Balzer
Lawrence and Elizabeth Duke
Leslie Dupree
Carol and Clark Ehlers

Faith and Larry Endresen
Bill and Christine Gallin
Kathy Jo Holevoet and
Brenda Steenhoek
Douglas and Deborah Howard
Judy and Jeff Hyland
Mary Lou Kotecki, Ph.D.
Harold and Rosanne Krubsack
Joanne and Thomas Lammers
Phillip and Nancy Martin
Barb Reardon
Charles and Cora Sharp
John Tritt

IN KIND GIFTS

Adventurous Brewing
Kimberlyn Aust
Backpocket Brewing
Steve Banks
Tara Barney
Les Bell
Bent River Brewing Company
Pat Bereskin
Big Grove Brewery
Bootleg Hill Honey Meads
Norm Bower
Johnny Brian
Karen Brinson
Dixie & Bill Burress
Chocolate Manor
Dean Christensen
Kay Coin*
Contrary Brewing Company
Davenport Junior Theatre
Patrick Downing
Kyle Ekberg & Aleeza Singh
Five Cities Brewing
Joel & Diane Franken
Front Street Brewery
Geneseo Brewing Company
Granite City
Great Revivalist Brewery
Bonnie Grebner
Carolyn Hamilton*
Hunt* & Diane Harris
Hignight's Florist
Joseph Hotle
Stacy Houk
Emma Hughes
Katie Kiley
Ann Koski
Jane Koski
Dean Kugler
Erling Larson III
Cora Leonard
Carolyn Levine
Brian & Diana Lovett
Randy & Linda Lewis
Robert Lipnick
Onnica Marquez
Jeremy Marquis
Renee Meyer Ernst
Midwest Ale Works
Monarch Kitchen & Bar

Victoria Navarro
Kim Nickels
Jacqueline O'Donnell
George Olson
Pour Bros. Craft Taproom
Quad City Music Guild
Quad City River Bandits
Kristen Quinn
Terry Rathje
Rebels and Lions Brewing
Michael Rehwaldt
St. Ambrose University
Linda Schneider
Malavika and Devendra Shrikhande
Tony & Joyce Singh
Steve Sinner
Sippi's
John & Diane Slover
Marie Stephens
Stompbox Brewing
Jay Stratton
Debora Stewart
Lynn Summers
Janelle Swanberg
The Last Picture House
Zaiga Thorson
Twin Span Brewing
Miranda Vavrosky
Laura Vincent-Arnold
Visit Quad Cities
Wake Brewing
Ellen Wagener
Cal & Jill Werner
Estate of JP Whitaker
Judy White
Whitey's Ice Cream
Amber Williams
Wilson's Orchard and Farm
Will Wolf
Xenotronics Company

*Deceased

EVANESCENT FIELD DONORS

Donations as of June 30, 2024

\$1,000,000 AND ABOVE

Destination Iowa, Iowa Economic
Development Authority
Regional Development Authority

\$500,000 - \$999,999

The Bechtel Charitable Trusts

\$100,000 - \$499,999

Don and Connie Decker
Patricia Figge**
Thomas K. and Jennifer Figge
William and Marie Wise
Family Foundation

\$25,000 - \$99,999

Andrew and Debi Butler
John O. and Lisa Figge**

Michael J. and Jennifer Figge**
Patricia Figge Glowacki**
John Deere Classic-Birdies for Charity
Elizabeth Figge Lemek and
Brian Lemek**
Mary Figge Power and John Power**
Ruhl & Ruhl Realtors
Wynne and David Schafer

\$10,000 - \$24,999

Chris and Connie Connolly
Carmen and Jack Darland
John Gardner and
Catherine Weideman
Bill and Dixie Burress/
H.O. Seiffert Lumber Company
Kay Hall
Samuel Skorepa and Abbey Furlong
Susan Perry and Stan Goodyear
Susan Quail
Richard and Susan Vermeer

\$5,000 - \$9,999

Anonymous
John H. Anderson
Don Doucette and Lynn Drazinski
Joseph D'Souza
Michelle Hargrave
David and Peg Iglehart
Kenneth Koupal and Thomas Kersting
Caroline Kimple
J. Randolph and Linda Lewis
Brian and Diana Lovett
Jane Magnusson
Carolyn and Joseph Martin
Mayor Mike Matson and Trish Matson
Daniel and Jennifer Molyneaux
Melissa and Stephen Mohr
Steven and Bonnie Powell
Alan and Julie Renken
Mark and Deborah Schwiebert
Aleeza Singh and Kyle Ekberg
Mark and Dana Wilkinson

\$1,000 - \$4,999

Norm and Linda Bower
Eddie Brian and Caroline Pasierb
Neil and Karen Dahlstrom
Michele and H.J. Dane
John and Nancy Danico
Patrick and Kristena Downing
Denise Garrett and Jim Niedelman
Dave and Connie Herrell
Ann Koski
Kevin and Jane Koski
Mary Lou Kotecki, Ph.D
Kay K. Runge
Matt and Tracy Schwind
Amy Trimble and Joseph Urbatis
Eric and Barb Trimble
Annika Tunberg
Andrew and Elizabeth Wallace
Xenotronics Company

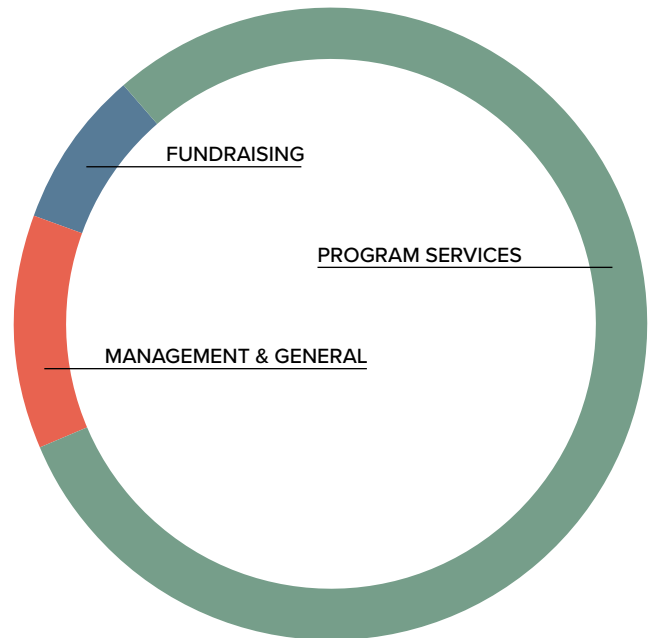
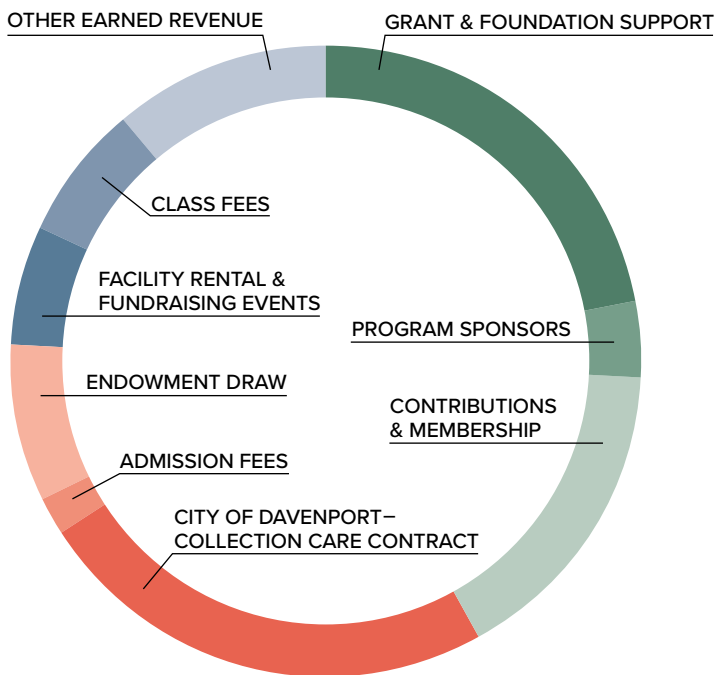
**In Memory of John Kahl Figge

FINANCIAL OVERVIEW

Total Dollars Raised

\$1,439,847

Thanks to you, we raised some serious funds to put toward our mission last year.



Revenue

Grant & Foundation Support	\$ 683,799
Program Sponsors	116,610
Contributions & Membership	496,445
City of Davenport: Collection Care Contract	753,000
Admission Fees	63,338
Endowment Draw (operations)	272,000
Facility Rental & Fundraising Events	190,983
Class Fees	229,485
Other Earned Revenue	336,341
Total Revenue	\$ 3,142,001

Expense

Program Services	\$ 2,942,941
Management & General	441,441
Fundraising	294,294
Total Expenses	\$ 3,678,676

Unaudited financial statements

FY24 BOARD OF TRUSTEES

Executive Committee

Aleeza Singh, President
 Ken Koupal, Immediate Past President
 Samuel Skorepa, Vice President
 Lee Gaston, Treasurer
 Carmen Darland, Secretary
 Carolyn Martin, MD, At Large
 Tom Terronez, At Large
 Denise Garrett, At Large

Board Members

Jonathan Burnett
 Kyle Carter
 Neil Dahlstrom
 Nancy Danico
 Joseph D'Souza, DDS
 Dave Herrell
 Mo Hyder
 Mary Lou Kotecki, PhD
 Marion Meginnis
 Delia Meier
 Sam Pilcher
 Wynne Schafer
 Tracy Schwind
 Annika Tunberg
 Archana Wagle, MD
 Dana Wilkinson

STAFF MEMBERS

(as of June 30, 2024)

Administration

Melissa Mohr, Interim Executive Director
 Todd Woeber, Chief Financial Officer
 Dena Border, Office Administrator

Collections & Exhibitions

Joshua Johnson, Co-Senior Curator
 Vanessa Sage, Co-Senior Curator
 Estevan Cornejo, Preparator
 Sophia Kaminski, Assistant Registrar

Education

Melissa Mohr, Director of Education
 Heather Aaronson, Gallery Interpretation & Engagement Coordinator
 Kelsey Vandercy, Outreach Educator
 Kili Alexander, Studio School Coordinator
 Laura Wreidt, Outreach & Community Engagement Coordinator

Development

Patrick Downing, Director of Development
 Chelsea Long, Grant Manager
 Emma Hughes, Membership & Database Coordinator
 Sara Morby, Development Officer

Marketing

Lacey Skorepa, Director of Marketing & Communications
 Natalie Dunlop, Public Relations & Special Projects Manager
 Peter Isota, Graphic Design & Social Media Specialist

Visitor Services | Museum Store

Beth Peters, Director of Retail & Visitor Services
 Barbara Bleedorn, Assistant Store Manager and Display Specialist
 Jocelyn Bakacs, Visitor Services Associate
 Cheryl Leamer, Visitor Services Associate
 Rhiannon Luedtke, Visitor Services Associate
 Isabella Perkins, Visitor Services Associate
 Luanne Taylor, Visitor Services Associate

Facilities

Tony Trout, Facilities Manager
 Zachary Russell, Facilities Manager Assistant
 Josie Cochuyt, Venue Coordinator

Gallery Hosts

Pamela Crouch, Gallery Host Manager
 Elissa Arbuckle
 Jack Beemsterboer
 Maribel Buxbaum-Lara
 Judith Costello
 Mathew Hampes
 Gina Kirshbaum
 Scott Rachel



FIGGE ART MUSEUM

225 West Second Street
Davenport, IA 52801-1804

Nonprofit Org.
U.S. Postage
PAID
Permit No. 243
Rock Island, IL



SHARE YOUR MUSEUM MEMORIES

Be part of the Figge's centennial story by sharing your museum memories and stories with us! From your first visit to the museum to a special connection you've made with a piece of art, we want to hear how the Figge has been part of your life. Scan the QR code to share your memories via text, photos, short videos, or even audio! You can also email us your story at celebrate100@figgeartmuseum.org or call us at 563.345.6656 to leave a message. Your memories are an important part of our story, bringing our shared history into focus for all to enjoy.

