

FIGGE

ART MUSEUM

2015-16 ANNUAL REPORT



FROM THE DIRECTOR



On behalf of the Board of Trustees and staff of the Figge Art Museum, I am pleased to present this report on the museum's achievements for the year ended June 30, 2016.

When he gave his beloved collection of 334 artworks to the City of Davenport in 1925, Charles A. Ficke explained his motivation quite simply: "Each generation must pay to succeeding generations the debt it owes to preceding ones." We are the current caretakers of the City's collection, and of the legacy of C. A. Ficke and so many others who built the museum and its collections over the past 91 years. Our responsibility is to fulfill the museum's mission of "bringing art and people together," and to make sure it survives and grows into the future.

In 2016 the Figge served over 110,000 people of all ages and backgrounds, both onsite and in schools across the Quad Cities community. We welcomed guests from all fifty states, the District of Columbia and twenty-three foreign countries. We brought priceless artworks from public and private collections to our galleries, and showcased the remarkable work of artists and students from our own region. Gallery tours and artist talks, studio classes, receptions and special events provided unique opportunities for learning and artmaking throughout the year. And we partnered with dozens of organizations, schools, colleges and universities and businesses to connect our community to the museum and to art in new ways.

We are also looking to the future, to ensure that the museum has the resources it needs to thrive and serve the next generations of Quad Citians. Under the leadership of Cindy Carlson, the board developed a multi-year strategy for financial sustainability. We have received a generous multi-year grant from the Bechtel Trusts towards eliminating the last construction debt

on our building, and we are working to secure the matching funds required. At the same time, we will keep our operating budget at the current level, despite the temptation to add costs for new programs and staff! Our annual fund continues to grow year over year, thanks to the generosity of our members and supporters, and we are working to increase our other revenue streams as well.

As a young man in Davenport in the 1870s, Charles A. Ficke was introduced to fine art by a friend who collected "chromos," inexpensive reproductions of famous paintings. At the 1876 Centennial Exposition in Philadelphia, he spent most of two weeks studying the paintings on view. He would be amazed to see today's beautiful glass museum, filled with original works, in his own hometown. I like to imagine him watching the students in the Davenport School District's Creative Arts Academy, who spend their days studying among the artworks he gifted to the City. I think he would be very proud.

Tim Schiffer

Tim Schiffer, Executive Director

WITH THANKS

As the governing body of the Figge Art Museum, the board, in consultation with the Figge's director and senior staff, determines the museum's strategic direction and provides oversight on art acquisitions, educational programming, events, fundraising and financial decisions. Without their leadership and support, the Figge would not be the thriving, energetic museum it is today.

FIGGE BOARD OF TRUSTEES

Executive Committee

Dee Bruemmer *President*

Cindy Carlson *Past President*

Ken Koupal *Vice President*

Hunt Harris *Treasurer*

Don Doucette, Ph.D. *Secretary*

Tara Barney *At Large*

Kay Hall *At Large*

Dr. Randy Lewis *At Large*

Dana Wilkinson *At Large*

BOARD MEMBERS

Dr. Amir Arbisser

Andy Butler

Nate Clark

Nancy Danico

Jerry Jones

Delia Meier

Sue Quail

Kay Runge

Jim Russell

Wynne Schafer

Mark Schwiebert

Debby Stafford

FIGGE ART MUSEUM 2016

Visitors from

50

states and

23

countries

20

special
exhibitions

103

Iowa and Illinois
schools from

66

districts brought
students for
docent-led tours

27,159

students served
through
The Big Picture

2,000

visitors in
four hours for
Art of Architecture
Free Family Day

5,181

attendees for
Thursdays at
the Figge

2,572

visitors attended
Young Artists at the
Figge receptions

5,704

K-12 students
participated in studio
arts programs

86

new acquisitions

EXHIBITIONS

The Figge presented twenty special exhibitions in 2016, with a broad range of artworks from historical to contemporary. Public talks by artists, curators and collectors, scheduled for our free Thursday evenings, gave visitors the “inside scoop” on the works on view. Figge docents received special training on each exhibition and offered public weekend tours as well as custom tours for groups of all ages.

On the heels of the Figge’s tenth anniversary, with the exhibitions *American Moderns on Paper: Masterworks from the Wadsworth Atheneum* and the tenth anniversary gifts to the Figge, we presented *Edward S. Curtis: 100 Masterworks*, classic photographs of Native Americans from the largest Curtis collection in existence. A concurrent exhibition by Wendy Red Star, *Peelatchiwaaxpáash/Medicine Crow (Raven) and the 1880 Crow Peace Delegation*, provided a Native American artist’s perspective on the subjugation of the Plains Indians. Both Curtis collector Christopher Cardozo and Wendy Red Star gave public talks and met with local Quad Cities students. On the fourth floor, DeWitt native Ellen Wagener’s exhibition *Horizon Lines* presented powerful evocations of the ever-changing Midwestern landscape. The permanent galleries were updated as well, with a new installation of works by Frank Lloyd Wright, funded by a generous grant from the S.C. Johnson Foundation.

Our winter season was headlined by *The Art of Architecture*, a sensational exhibition that featured Adam Reed Tucker’s LEGO® sculptures of architectural landmarks, paired with Hunt Harris’

stunning photographs of Chicago. LEGO activities in the studios were a hit with visitors of all ages, and our Free Family Day drew more than 2,000 visitors in four hours. *Mississippi River Views from the Muscatine Art Center* presented paintings, drawings, maps and artifacts that told many stories about the river’s history. The *Rock Island Art Guild Exhibition* included works by forty-two regional artists, juried by the Director and Chief Curator of the DePaul Art Museum, Julie Rodrigues Widholm. The exhibition fascinated visitors, in particular school-children who came for docent-led tours.

Summer began with *Picturing the Prairie: Tallgrass QC*, an exhibition of prairie-inspired works by six regional artists that was part of a new collaboration with Nahant Marsh, WVIK, WQPT and other partners to raise awareness about prairie ecology. In June, our Art@Heart Gala celebrated the opening of *The Wonderful World of Oz*, a selection of Oz-related works from the collection of Willard Carroll and Tom Wilhite. Oz was a hit with visitors of all ages, and was named one of the summer’s Must-See Exhibitions by *USA Today*. David Plowden’s remarkable photographs, a gift to the Figge from the artist and his wife, provided a stunning look at the Midwest and industrial America.

The Figge’s ambitious exhibition program brings a remarkable variety of artworks to the Quad Cities through the cooperation of artists, museums, collectors and other lenders, and the support of our generous exhibition sponsors and supporters.

American Moderns on Paper
10th Anniversary Exhibition

The Model Museum

Corn Zone

I heart Figge Art Museum;
Day of the Dead: Art,
Culture & Spirit; 8th Annual
College Invitational

Young Artists

Ellen Wagener: Horizon Lines

Edward S. Curtis:
100 Masterworks

Wit and Whimsy: Photographs
by Kenneth Josephson

Wendy Red Star:
Peelatchiwaaxpáash/
Medicine Crow (Raven)
and the 1880 Crow Peace
Delegation

Terry Rathje: Allinitogether

The Art of Architecture

Mississippi River Views from
the Muscatine Art Center

Cameo Stones

Rock Island Art Guild
Fine Arts Exhibition

Frank Lloyd Wright:
An American Architecture

Picturing the Prairie:
Tallgrass QC

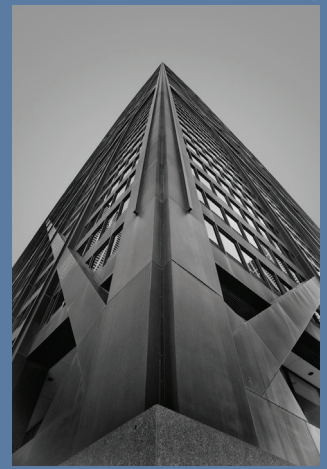
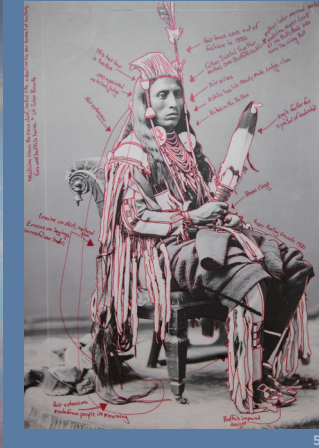
The Wonderful World of Oz

David Plowden:
An American Master

Masterpieces of French Art
from the Mary Musser
Gilmore Collection

Partnerships: Quad City
Symphony Cellos

¹ David Plowden, *Statue of Liberty, Caven Point Road, Jersey City, New Jersey*, 1967, inkjet print, Gift of David and Sandra Plowden, 2014.9.113; ² Edward S. Curtis, *An Oasis in the Badlands*, 1905/1908, photogravure, courtesy of Christopher Cardozo Fine Art; ³ S.C. Johnson & Company, Administration Building Secretary’s Desk and Chair, circa 1936, wood and painted metal, manufactured by Metal Office Furniture Co., loan courtesy of the S.C. Johnson; ⁴ Ellen Wagener, *Summer*, 2014, pastel, courtesy of the artist; ⁵ Wendy Red Star, a historical photograph with annotations by the artist, from the installation *Peelatchiwaaxpáash/Medicine Crow (Raven) & the 1880 Peace Delegation*, 2014, courtesy of the artist; ⁶ Marc Chagall, *Cerises au Bouquets (Cherries with a Bouquet)*, 1964, oil on canvas, Collection Muscatine Art Center, Gift of Mary Musser Gilmore, in memory of Mrs. Gilmore’s mother and father, Sarah Walker Musser and Richard Drew Musser, 1992.3.2; ⁷ Photograph courtesy of J. Hunt Harris; ⁸ Sara Slee Brown, *Stone City Fireflies*, mixed media, courtesy of the artist; ⁹ Mary Merkel Hess, *Transparent Vessel*, 1996, paper board and gampi paper; ¹⁰ Boris Grinnon, two-panel poster for the French release of *Le Magicien d’Oz (The Wizard of Oz)*, 1940, MGM, France, color lithograph, Courtesy of The Willard Carroll / Tom Wilhite Collection; ¹¹ Tom Uttech, *Kisibakwad*, 2014, oil on linen in hand painted frame, gift in honor of Budge, Ed and Peter Gierke, 2014.18; ¹² Kenneth Josephson, *LA*, 1982, gelatin silver print, Gift of Brent Sikkema, 2009.6.1; ¹³ Joseph Rusling Meeker, *Mississippi River Bluffs*, 1880, oil on canvas, Collection Muscatine Art Center.



MY EXPERIENCE HERE HAS BEEN AN AMAZING GIFT. IT IS LIKE I AM IN ART HEAVEN!

*Analyn Serrano
July, 2015*



11

12

13

ACQUISITIONS

2016 was a banner year for the Figge's art collection, with 86 new artworks acquired through gifts and purchases. The Acquisition and Loan Committee of the Board of Trustees, chaired by Linda Lewis, reviews all gifts and proposed purchases to ensure that the works complement the existing collections of the Figge and the City of Davenport, and are of a quality consistent with works already on view.

HIGHLIGHTS

FOX

Fox is a drypoint print by Cubist pioneer Georges Braque, given by Leslie Armstrong and Vanessa Cortesi in honor of longtime docent Jean Priester. This is a rare and important addition to the Figge's growing collection of prints.

HAITIAN COLLECTION

The museum's collection of Haitian art grew by seven works, including *Untitled (Head of Woman and Cow)* by Jacques Enguerrand-Gourgue, the gift of Drs. Amir and Lisa Arbisser in celebration of the Figge's 10th anniversary, and a collection of six paintings from the collection of James L. Huffman of Sausalito, California. A diplomat for the U.S. Department of State, Mr. Huffman was stationed in the Dominican Republic

in the early 1960s, at the same time that Dr. Walter Neiswanger began to visit Haiti and purchase works that would be the foundation of the museum's collection. The two men acquired work by many of the same artists. New additions to the Haitian collection will be on view in the Lewis Gallery in the summer of 2017.

KADDISH

The family of Alice and Richard Bowers gifted the *Kaddish* suite of eight color etchings by Mauricio Lasansky (on view in the Figge Orientation Gallery through January 8). Lasansky was a legendary teacher and printmaker at the University of Iowa, and this series, based on the Jewish prayer of mourning, is one of his best known.

OTHER ACQUISITIONS

The Acquisition and Loan Committee approved a number of important purchases through the Friends of Art Acquisition Fund during the past year. These included:

- *New House*, an oil painting by Doris Lee, an important 20th Century American modernist, born in Aledo, Illinois
- *Night Shadows*, an etching by American master Edward Hopper
- *New York State*, a signature work by photographer Kenneth Josephson, who was featured in an exhibition at the Figge in 2015.

1 Georges Braque, *Fox*, 1911, drypoint on Arches paper, Gift of Leslie Armstrong and Vanessa Cortesi in honor of Jean Priester, 2015.19; 2 Mauricio Lasansky, *Kaddish #8*, 1976, intaglio: etching, engraving, soft ground, aquatint, electric stippler, scraping and burnishing, Gift of The Alice and Richard Bowers Family, 2015.16.8; 3 Kenneth Josephson, *New York State*, 1970, gelatin silver print mounted on card, Museum purchase; Friends of Art Acquisition Fund, 2015.29; 4 Doris Lee, *New House*, circa 1940s, oil on canvas, Museum purchase; Friends of Art Acquisition Fund, 2016.7; 5 Jacques Enguerrand-Gourgue, *Untitled (Head of Woman and Cow)*, circa 1975, oil on linen, Gift of Drs. Amir and Lisa Arbisser in Celebration of the Figge Art Museum 10th Anniversary, 2015.17; 6 Edward Hopper, *Night Shadows*, 1921, etching, Museum purchase; Friends of Art Acquisition Fund, 2015.21

PORTRAIT OF MAQUOKETA IN DES MOINES

Rose Frantzen's multi-part portrait of her hometown traveled from the Figge to the State Historical Museum in Des Moines, where it was on view from March through September. Acquired by the Figge in 2013, *Portrait of Maquoketa* will be on view in the third floor gallery through February 12, 2017.

Image: Rose Frantzen speaking with Lt. Governor Kim Reynolds at *Portrait of Maquoketa* in Des Moines.





EDUCATION

The Figge Education Department had another outstanding year, serving over 57,000 individuals with unique and imaginative programs of all types. The Figge continues to be an important resource for educational institutions in the Quad Cities, from pre-schoolers who visit with their summer camps to graduate students in the Western Illinois University Museum Studies program.

DOCENTS AND TOURS

Trained Figge docents led gallery tours for 5,131 K-12 students who attended with their classes, representing 56 schools from 26 districts and nine counties in Iowa, and 47 schools from 40 districts and nine counties in Illinois. All fifth graders in the Davenport Community School District come to the Figge as part of the River Currents program. An additional 795 children came for tours with other groups, such as scout troops, and 736 adults participated in tours of special exhibitions. Docents attended monthly training sessions to prepare for tours of changing exhibitions, and a class of twelve new docents joined the group in September 2015.

OUTREACH

The Big Picture program sends Figge outreach educators into regional schools to make curriculum-based art presentations, with a hands-on activity included. With the addition of a second staff person, the program has grown to serve 27,159 individuals in the 2015-2016 fiscal year. Presentations were made in 52 public schools in 15 districts, in ten private or religious schools, and in nine other venues. The Big Picture is offered free of charge to school classrooms, and only a \$25 fee to after-school programs and adult venues such as retirement homes. Educators take actual artworks into the classrooms, such as ancient Roman oil lamps for the lesson on Roman city planning, or authentic medieval manuscripts for the lesson about the Middle Ages.

COMMUNITY GALLERY

The Education Department organized six exhibitions in the Mary Waterman Gildehaus Community Gallery during the year: *I (heart) Figge Art Museum*; *Day of the Dead*; *Art, Culture & Spirit*; *8th Annual College Invitational*; *Follow the Yellow Brick Road*; and *the Young Artists Exhibitions* (works by students in seven local school districts). The free receptions for *Young Artists* attracted 2,572 visitors, many of whom participated in the Museum's maker spaces: Studio1, Learn to Look and the Family Activity Center.

FAMILY DAYS

The Figge presented five Free Family Days during the year that attracted 7,995 visitors, including more than 2,000 visitors in four hours for the LEGO® exhibition and Day of the Dead. These events feature special exhibition-related activities in the studios, films, music, performances and refreshments.

STUDIO PROGRAMS

The Figge offered a variety of hands-on classes that served 832 adults and 5,704 students during the year, including students from the Creative Arts Academy (CAA). Students had conversations with visiting artists such as Ellen Wagener, Wendy Red Star and collector Christopher Cardozo. The Figge also held a number of special events for teachers and students, including Teacher Appreciation Open House (a resource night), portfolio days for college-bound art students, and the end-of-year celebration for students and families of the CAA. These events attracted a total of 2,548 visitors.

THURSDAYS AT THE FIGGE

The Figge is open on Thursdays, with free admission from 5 p.m. until 9 p.m. Each week, public programs are scheduled and range from scholarly lectures to dance performances to "PechaKucha Nights" where community members talk about topics of their own choosing. These programs drew an audience of 5,181.

GENIE THE ROBOT

With a generous grant from Genesis Health System, the Figge has acquired Genie, a remote controlled robot capable of providing self-directed tours of museum exhibitions for home-bound individuals. Developed by a software engineer who is also a quadriplegic, the robot can be piloted through the galleries with arrow keys by someone off-site. The virtual visitor sees both the artworks and the robot's path on his own monitor, while a tour guide at the museum can see and communicate with the person through the robot's screen. Pilot tours with Genie were conducted this year at Crosstown Senior Living in Silvis, with assistance of Figge docents. "This is an amazing tool for expanding the reach of the museum," said Figge Director of Education Melissa Mohr. "We are looking forward to engaging more home-bound individuals, and eventually hope to extend Genie's reach into classrooms as well."

INSTITUTIONAL MEMBERS

Augustana College, Black Hawk College, Eastern Iowa Community College, Knox College, Palmer College of Chiropractic, St. Ambrose University, University of Iowa and Western Illinois University



WONDERFUL EXHIBIT AND HANDS-ON ROOM!

Toni and Jeff from Edwards, Washington, July 2016





The Wonderful

PREMIER SPONSOR



SUPPORTING EVENT SPONSORS



EVENT SPONSORS

Barry Anderson of Anderson,
Lower, Whitlow, P.C.
Tara Barney
Don Doucette and
Lynn Drazinski
Dr. Randy and Linda Lewis

Delia and Dave Meier
Paragon Commercial Interiors
Quad City Bank & Trust
Susan Quail of Q10 Enterprises
Terrostar / Medix Dental
Deann Thoms

U.S. Bank
Wells Fargo
Xenotronics
Mark and Barbara Zimmerman
Cathy Weideman and John Gardner

Sponsors listed in bold have continued their support for multiple years

2016 GALA COMMITTEE

Wynne Schafer – Chair
Heather Aaronson
Brian Allen
Steve Banks
Janessa Calderon
Mike Cavins
Bob Deblaych
Mike Dietsch
Natalie Dunlop
Laura Dunn
Eileen Eitrhein
Lopeti Etu
John Gardner
Kelsey Gross
Jen Hafner
Kay Hall
Suzie Hall
Kelly Hanson
Sarah Hepner
Dakota Hootman
Katie Kiley
Marj Kinsler
Jane Koski
Sara Morby
Lee Meier
Nell Meier
Amanda Miller

Evan Moe
Bernadette Murphy
Anne Powers
Kara Priemmer
Raelene Pullen
Jennifer Saintfort
Marysue Salmon
Daniel Sheridan
Marin Schiffer
Tim Schiffer
Debby Stafford
Hugh Stafford
Lynn Gingras-Taylor
Brooke Terronez
Amy Trimble
Tony Trout
Andrew Wallace
Cathy Weideman
Barb Zimmerman

IN-KIND DONORS FOR TALENTS, GOODS AND SERVICES

Drs. Lisa and Amir Arbisser
Steve Banks
Mike Cavins – Uncommon Ground

Chocolate Manor
Davenport Junior Theatre
Dorothy - Grace Almgren
Wicked Witch - Veronica Augustine
Munchkins - Carly Berta, Lola Brooke
Tinman - Shaun Garrity
Scarecrow - Grace Hipple
AmeriCorps Outreach Member - Helena LaCorte
Costumes - Kristin Meyer, DJT President
Oz Greeter / Doorman - Cayla Odendahl
Cowardly Lion - Jillian Sharfe
Artistic Director - Daniel DP Sheridan
Eileen Eitrhein
Galvin Fine Arts
James Jackson
Dean Kugler
Mimzi Art & Frame
Rose Mohr
Lisa Whalen

DONATIONS OF ART FOR LIVE AUCTION

Hunt Harris

Ralph Iaccarino
Necker's Jewelers
George Olson
David Plowden
Randy Richmond
Steve Sinner
Ellen Wagener

EDUCATION FUND

Mike and Barb Bleedorn
Vanessa Brown and Sage Shale
Don and Dee Bruemmer
Bill and Dixie Burress
Andy and Debi Butler
Karey and John Carlin
Nate and Melissa Anderson Clark
Starr and Michael Doak
Jeff and Lynda Eirinberg
Joel and Diane Franken
Bill and Chris Gallin
John and Kay Hall
Perry and Elise Hansen
Jan Harper
Rob and Mindy Harson
John and Patty Johannesen
Joe and Ana Kehoe



World of Oz

Marj Kinsler
 Kevin and Jane Koski
 Brian and Diana Lovett
 Mary Lujack
 Marlene Marolf
 Steve and Melissa Mohr
 Steve Musson and Dori James
 Arla Olson
 Heidi Parkhurst and Steve McCann
 Nancy Polis
 Jeffrey Porter
 Anne Powers
 Scott and Raelene Pullen
 Al and Julie Renken
 Bruce and Sherry Ristau
 Kay Runge
 Dan and Marysue Salmon
 Mark and Debbie Schwiebert
 Hugh and Debby Stafford
 George and Sue Staley
 Dick Taber and Brad Mumm
 Clara Delle Thompson
 Sen. Maggie Tinsman
 Aggie Waterstreet
 Donald and Lanora Welzenbach
 Todd and Heidi Woeber
 Mark and Laura Wriedt

Nell Meier
 Doug Miller and Chris Cooper
 Corina Nesbitt
 Ruthie and Bobby Parker
 Mark and Debbie Schwiebert
 Ryan and Heidi Sloan
 Sharon Suss
 Virginia Treasure
 Angel Tweet
 Dr. Joe Urbaitis
 Jeremy and Lindsey Womack

BUS TRANSPORTATION

Anonymous
 Drs. Amir and Lisa Arbisser
 Steve Ash
 Honey and Daniel Bedell
 Andy and Debi Butler
 Paul Cavalli and Jack McKenney
 Nancy Chapman
 Dean Christensen
 Nate and Melissa Anderson Clark
 John and Nancy Danico
 John Hobbs and Davia Gallup
 John Gardner
 Sarah Greim
 John and Kay Hall
 Perry and Elise Hansen
 Rob and Mindy Harson
 Nancy Hass
 Charles Horan
 Ranbir Kang
 Kevin and Jane Koski
 Todd and Mary Beth Kunau
 Henry and Heidi Larson
 Margaret and Bob Lelonek
 Dr. Randy and Linda Lewis
 Brian and Diana Lovett

THE BIG PICTURE

Mike and Barb Bleedorn
 Arthur and Nicole Carkner
 James and Carol Determan
 John and Maureen Golinvaux
 Mike and Desi Gregg
 Jan Harper
 James Havercamp
 Noland and Kelsey Kropf
 Marlene Marolf
 James and Sylvia Martin
 Susan McPeters

Donald and Janet Luethje
 Dennis Miller
 Roger and Sarah Mohr
 Dan and Jenny Molyneux
 Heidi Parkhurst and Steve McCann
 Glenn Peterson
 Dan Portes and Judy Shawver
 Scott and Raelene Pullen
 Sue Quail
 Bruce and Sherry Ristau
 David and Wynne Schafer
 Mark and Debbie Schwiebert
 Tony and Joyce Singh
 Sheila and Allie Spickermann
 Thomas and Mary Ann Stoffel
 Sharon Suss
 Jerry and Marie Tarbox
 Thomas C. Taylor and Thomas M. Fielder
 Chris and Trish Townsend
 Eric and Barbara Trimble
 Richard and Susan Vermeer
 Andrew and Elizabeth Wallace
 Cathy Weideman
 Ann Werner
 Kirk and Lisa Whalen

CREATIVE ARTS FOR THE CLASSROOM

Jerry and Carrie Bowman
 John and Nancy Danico
 Tessa Hahn
 Heidi Parkhurst and Steve McCann
 Hugh and Debby Stafford

MUSEUM STUDIES TRIP

Tara Barney
 Bob and Julie Blew

Karey and John Carlin
 Paul Cavalli and Jack McKenney
 Dr. Randy and Linda Lewis
 Carrie McGuire
 Bernadette Murphy
 Chuck and Deanna Slack
 Bud and Lori Sturtzer
 Dick Taber and Brad Mumm
 Chris and Trish Townsend

YOUNG ARTISTS SCHOLARSHIPS

Paul Cavalli and Jack McKenney
 David and Missy Dell
 Lynn Dvorak
 Jeff and Lynda Eirinberg
 Jan Harper
 James Havercamp
 Robert and Dolores Rayette Kustom
 Matthew and Katya Magee
 Donald and Angela Normoyle
 Jan Pomije
 Bruce and Sherry Ristau
 Doug and Deb Roberts
 Dan and Marysue Salmon
 Kerstin Stanford-Dorren
 Richard and Susan Vermeer
 Aggie Waterstreet
 Donald and Lanora Welzenbach
 Rock and Suzanne Woodstock

YOUNG ARTISTS EXHIBITION

Mary Lujack
 John and Diane Slover
 Tom and Brooke Terronez





THANK YOU





to everyone who helped make the 2016 Gala a success!



DEVELOPMENT

“Each generation must pay to succeeding generations the debt it owes to preceding ones.”

C. A. Ficke

THE SEASON OF GIVING

“...All you have shall some day be given; Therefore give now, that the season of giving may be yours...”

Excerpt from *The Prophet*, by Khalil Gibran

It is no secret I think mine is the best job at the Figge Art Museum. It is a privilege to work first-hand with our donors; listening to their stories about what the arts, and specifically, our museum have meant to them over the years and now, today. Understanding the reasons for their gifts and their affection for this community, our home.

A few months ago, a donor and I were discussing a major gift he made some years before. He confided in me that single gift to the Figge, brought him more

joy than any other gift he had ever made.

Indeed, I reflect on his comment every day and carry it with me.

Most donors prepare legacy gifts for the museum and we receive notification after they are gone. The donor never sees the full benefit of their gift. The season of giving is not theirs. We celebrate the gift without the donor.

As a means of providing options for ways the season of giving may be yours, I reached out to Marty Shenkman to provide charitable planning tips that illustrate several ways to give, and the benefits for each. If you have interest or are considering a gift to the museum, please be sure to read his article on pages 18-19.

The pages of this Annual Report are filled with examples of the accomplishments achieved by the investments of time, talent and treasure by thousands of people. We are the beneficiaries of preceding generations and the benefactors of those yet to come.



Raelene Pullen
Director of Development
563.345.6637
rpullen@figgeartmuseum.org



ONLY TRUE CAR™ CERTIFIED LUXURY DEALER IN THE QUAD CITIES



LujackLuxury.com

Just South Of Northpark Mall

FRIENDS OF THE FIGGE



RED, WHITE, AND BOOM! WATCH PARTY

Over 400 members and guests attended the Friends of the Figge's Red, White and Boom! Watch Party on Sunday, July 3. Everyone enjoyed viewing art throughout the entire museum, families played board games, and kids enjoyed creating their own works of art on the plaza with colored chalk. Participants enjoyed a picnic buffet and complimentary ice cream sundaes from Whitey's Ice Cream before watching the spectacular fireworks show from the south side of Figge. Dean Christensen, committee chair, commented, "With the help of staff and volunteers this event just keeps getting better and better."



ART OFF THE WALL

PREMIER SPONSOR



PARTNER SPONSORS

Dean Christensen
A-L-L Equipment
Professional Touch Cleaning Services, Inc.

RECOGNITION FOR GIFTS, SERVICES, AND IN-KIND

AAA - The Auto Club Group
Drs. Lisa and Amir Arbisser
Michael Blaser
Libbet Brooke
Dean Christensen
Glass Heritage
Halligan-McCabe-DeVries
Funeral Home
Hot Glass
Hunt Harris
Hignight Flowers
Hobby Lobby
Stacey Houk
Chris Jackson

EVENT SPONSORS



James Jackson
Joe and Ana Kehoe
Marj Kinsler
Jim and Debra Leach
Jeff Miller
Mimzi Art and Frame
Anne Powers
Re-Cre8 Studio
Jerry and Judy Schick
Tim Schiffer
Loren Shaw Hellige
Steve Shippey
Devendra Shrikhande
Dick Taber
Antonio Ortiz Valverde
Ellen Wagener
Wastyn & Associates

2016 ART OFF THE WALL AUCTION COMMITTEE

Vanessa Brown
Ali Boyler

Dean Christensen
Lynn Dvorak
Eileen Eitrheim
Jane Ermeis
Kay Hall
Joshua Johnson
Ana Kehoe
Marj Kinsler
Ann Lohmuller
Ann McCarthy
Sara Morby
Bernadette Murphy
Gladys Navarro
Priscilla Parkhurst
Anne Powers
Meg Priester
Raelene Pullen
Julie Renken
Jennifer Saintfort
Wynne Schafer
Debby Stafford
Deann Thoms



2016 FRIENDS OF THE FIGGE COMMITTEE

Join the Friends of the Figge by calling Sara Morby 563.345.6642.

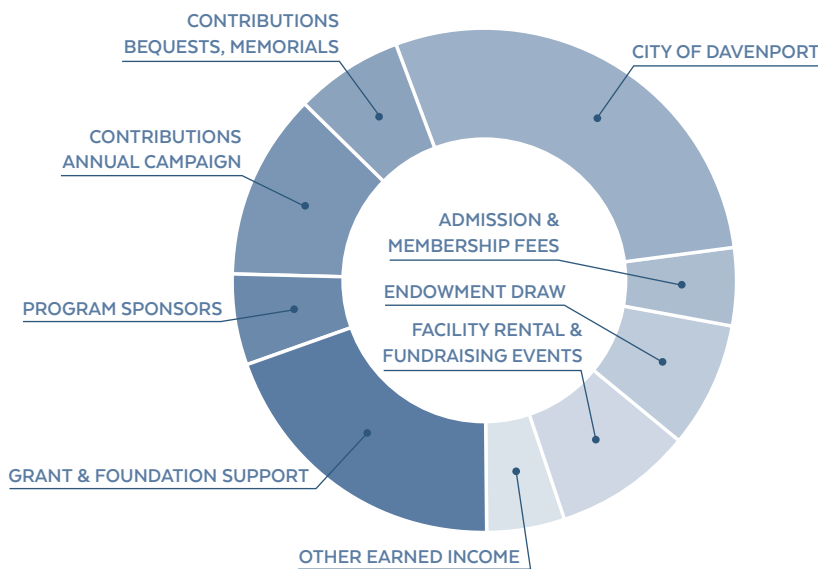
Cindy Carlson
Dean Christensen
Lynn Drazinski
Eileen Eitrheim
Kay Hall
Katie Kiley
Marj Kinsler

Sara Morby
Priscilla Parkhurst
Anne Powers
Raelene Pullen
Julie Renken
Jennifer Saintfort
Wynne Schafer

Tim Schiffer
Debby Stafford
Dick Taber
Brooke Terronez
Deann Thoms
Dana Wilkinson

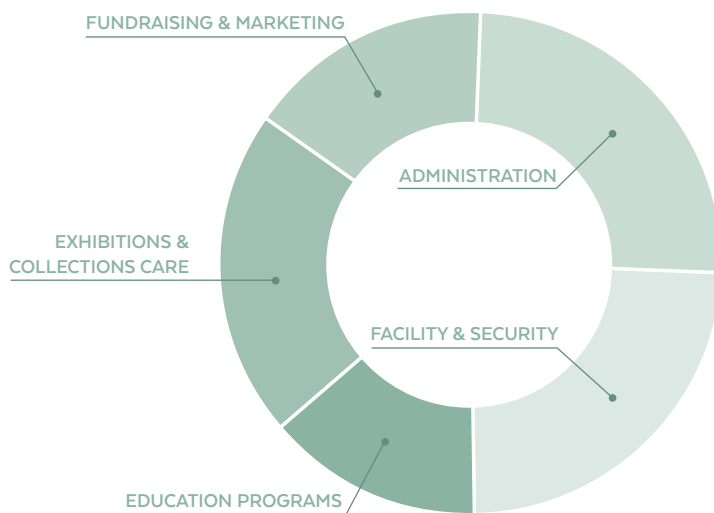
FINANCIALS

The Figge finished the 2016 fiscal year with a surplus in its operating fund. However, this surplus does not include the annual payment on the remaining construction debt on the Figge building. This payment of \$250,000 annually is made to the Museum of Art Foundation, a separate but affiliated nonprofit that was created when the effort began to build the new museum. Recognizing that these annual debt payments are not sustainable over time, the Figge Board of Trustees has initiated a concentrated effort to eliminate the construction debt, which stood at approximately \$2.4 million in June 2016. The Figge has received a \$1 million challenge grant, payable over five years, from the Bechtel Trusts, to be matched with \$2 million in new donations, for debt elimination. As of June 30, the museum had raised nearly \$325,000 towards the match.



REVENUE

Grant & Foundation Support	\$ 512,382
Program Sponsors	150,865
Contributions Annual Campaign	295,347
Contributions Bequests, Memorials	168,704
City of Davenport	753,000
Admission & Membership Fees	123,875
Endowment Draw (operations)	195,302
Facility Rental & Fundraising Events	243,124
Other Earned Income	121,675
Total Revenue	\$ 2,564,274



EXPENSE

Education Programs	\$ 343,050
Exhibitions & Collections Care	531,024
Fundraising & Marketing	390,011
Administration	608,385
Facility & Security*	604,065
Total Expense	\$ 2,476,535

(does not include rent payment to Museum of Art Foundation)

* Less University of Iowa cost sharing

Total Revenues (unaudited) | Total Expenses (unaudited, before rent payment to Museum of Art Foundation)

Note: Debt is carried on the books of a separate but related organization and amounted to \$2,431,000 at June 30, 2016

ANNUAL GIVING

MRS. CHASE CORDIALLY REQUESTS YOUR SUPPORT FOR THE ANNUAL FUND DRIVE!

Mrs. Chase in Pink has been a beloved work in the City of Davenport Art Collection since it was purchased for the museum in 1927 by the volunteer support group The Friends of Art, a predecessor of Friends of the Figge. With its virtuoso brushwork and glowing colors, the painting conveys the artist's affection for his wife of thirty years, Alice Gerson Chase, who first modeled for him with her sisters when she was a child. The painting recently returned from a "beauty treatment" at the ICA Conservation Center in Cleveland, Ohio, where it was thoroughly cleaned and received a new coat of varnish, allowing the original colors to shine like new. She also has a new gold frame, a recreation of an original design by Chase's friend, the renowned Beaux Arts architect, Stanford H. White. The restored and reframed painting will be on view once again in the Figge galleries, beginning November 16. As a special treat, Chase's portrait of their daughter, Koto, at age 10 will be shown alongside her mother, courtesy of the Driscoll/Babcock Gallery in New York City.

Mrs. Chase in Pink and masterworks by Grant Wood, Thomas Hart Benton, and many other artists are a part of the education of thousands of students in the Quad Cities each year, giving them a window into the lives and experiences of other people and other times. While the Figge receives ongoing support from the City of Davenport for care of its art collection, more than two-thirds of our operating budget comes from outside sources, including the Annual Fund. Your support enables us to maintain our exceptional education programs, reaching over 50,000 students a year, and bring remarkable exhibitions, such as *The Wonderful World of Oz* to the Figge.

Do a favor for Mrs. Chase!

Support the Figge with a donation to the Annual Fund! Your gift, along with those of over 600 of your friends and neighbors, makes world-class art a part of daily life in the Quad Cities!

ABOVE RIGHT: William Merritt Chase, *Mrs. Chase in Pink*, circa 1902, oil on canvas, City of Davenport Art Collection, Museum purchase, Friends of Art Acquisition Fund, 1929.415; BELOW RIGHT: William Merritt Chase, *Koto Chase*, 1899, oil on canvas, courtesy of Driscoll Babcock Galleries



THANKS TO THE FIGGE STAFF

First row (left to right): Kelsey Vandercoy, Outreach Educator; Vanessa Benson, Office Administrator; Lynn Gingras-Taylor, Creative Arts Coordinator; Vanessa Brown, Curatorial Assistant; Melissa Mohr, Director of Education. Second row: Sara Morby, Development Assistant; Chris Rivers, Director of Retail and Visitor Services; Brian Allen, Outreach Educator; Barb Bleedorn, Museum Store Associate; Heather Aaronson, Education Programs Coordinator; Todd Woeber, Chief Financial Officer; Bob Deblaey, Facilities Manager. Third row: Natalie Dunlop, Marketing Assistant; Tim Schiffer, Executive Director; Tony Trout, Facilities Manager Assistant. Fourth row: Laura Dunn, Outreach Coordinator; Andrew Wallace, Manager Collections and Exhibitions.

Not pictured: Raelene Pullen, Director of Development; Tessa Pozzi, Annual Giving Coordinator; Joshua Johnson, Assistant Registrar/Preparator.

CHARITABLE PLANNING TIPS WHEN CONSIDERING A GIFT TO THE FIGGE

ACCELERATE YOUR BEQUEST

Have you included a bequest in your will to the Figge Art Museum? Most donors no longer face a federal estate tax as a result of the increase in the exemption. This is the amount you can bequeath at death without an estate tax. It is \$5,450,000 in 2016. So a bequest may not provide the estate tax deduction you thought it would when you signed your will. Accelerate your bequest to the Figge now and garner an income tax deduction. That tax benefit might be quite valuable especially when compared to NO estate tax benefit in the future. To avoid any issues ask the Figge to acknowledge in writing that the gift is an "advancement" of the bequest.

MAKE YOUR CONTRIBUTIONS BY CREDIT CARD

A contribution made to a qualified charity, such as the Figge, by credit card is deductible in the year the charge is made, regardless of when you actually pay your credit card bill. You should keep the credit card statement showing the name of the charitable organization, the amount of the contribution, and the date of the contribution.

GIFTS OF SECURITIES

Get a double benefit when you donate appreciated stocks to the Figge. How so? You will receive an income tax deduction for the full fair market value of the stock you donate. This amount is determined as of the date the gift is made. In addition, you avoid paying any capital gain tax on the increased value of the stock.

HERE ARE TWO EXAMPLES:

1 Mrs. Williams wishes to make a \$20,000 gift to the Figge. The easy way would be to write out a check for \$20,000 and simply donate cash. To raise the cash for the donation Mrs. Williams sells a stock valued at \$20,000 which she purchased several years ago for \$3,000. That triggers a \$17,000 capital gain. Mrs. Williams will owe a capital gains tax of \$4,250 if she is in a 25% capital gains tax bracket. Mrs. Williams contributes the cash (from the stock she sold and other cash) to the Figge and has a \$20,000 income tax deduction. If she is in a 35% tax bracket for regular income taxes (capital gains are taxed at lower rates) that would save her \$7,000 in income taxes [\$20,000 contribution deduction x 35%].

2 Before making the donation Mrs. Williams calls her investment adviser and has her transfer (ACAT) the \$20,000 of appreciated stock directly to the Figge. Mrs. Williams earns the same income tax contribution deduction worth \$7,000 as in Example #1. However, because the appreciated stock itself was donated, Mrs. Williams avoids the \$4,250 capital gains tax adding significantly to the tax benefit of her donation.

With stock markets much higher than say, in 2010 comb your portfolio for appreciated stocks to donate instead of cash. Be careful, as the reverse of this planning is not beneficial. Never donate stocks that have declined in value. Your donation will be limited to the value of the stock and you'll never realize the tax

loss. Instead have your wealth manager sell the losers and use the losses to offset gains on other stocks she might think are appropriate to sell.

USE INSURANCE TO FUND A PLANNED GIFT TO THE FIGGE

You might wish to make a long term or planned gift to the Figge in an amount much larger than you might be able to pay today, to show your support and assure the future of the Museum. One approach is to agree in a written pledge agreement to donate a specified amount each year to the Figge and to help the Figge purchase a life insurance policy on your life. It might be simpler for you to purchase the policy and then donate it to the Figge. For this plan to work the policy should be structured in a manner that assures the Figge will have a growing asset (the value of the policy) it will pay off in the future. Term policies, or a policy that is not adequately funded won't accomplish your goals and won't be practical for any charity to accept. Also, when making a planned gift be certain that the amount you'll be paying in each year is in addition to your current gifts. You should not penalize the recipient charity by taking current dollar donations and deferring them in an insurance plan.

CONTRIBUTE LIFE INSURANCE YOU NO LONGER NEED

You might have purchased life insurance long ago, when perhaps, you had young children and wanted to assure an estate if you died prematurely. Those young children now have children of their own and the reason for the insurance has long ago

vanished. Perhaps instead you purchased life insurance to pay an estate tax when the exemption (the amount you could transfer without a federal estate tax) was only \$1 Million and now that the exemption is \$5.4 Million, you no longer need that insurance. Before cancelling the policy, contact the Figge to see if you can donate that coverage. If the insurance is owned by a trust (which has long been a common planning technique) don't give up. Have your estate planning attorney review the trust and see if there is a way to extract the policy from the trust. Some trusts permit unlimited principal distributions to the beneficiaries and it might be possible to distribute the policy to a beneficiary and have the beneficiary donate it. The ideal type of policy to donate is one which is fully paid up so that no future premium payments are required. If there will be the need for future premiums that should be handled as discussed above.

Properly planned you will get a charitable income tax deduction for the value of the policy in the year of the gift, as well as annual deductions for the premium payments paid to or for the benefit of the Figge.

Be sure to talk to both your CPA and insurance adviser when planning

an insurance gift. You cannot keep any beneficial interest in the policy you donate to the Figge or you'll lose out on any income tax deduction.

DONATE A REMAINDER INTEREST IN YOUR HOME OR A FARM

You're enjoying your golden years living in your home. You'd love to get more income tax deductions (who wouldn't!) and also want to benefit the Figge, but your cash and investments limit what you feel comfortable donating now. Perhaps there is a way you can secure a sizable long term donation to the Figge, not infringe on the cash flow you'll need in your golden years, and get a great tax benefit, all by donating your home or farm to the Figge today, but keeping the right to live in it for the rest of your life. There are a few technical twists to this GREAT benefit.

A charitable deduction is generally not permitted for charitable gifts of less than your entire interest in a property (called a "partial interest"). So you cannot donate 1/2 the ownership of a painting and obtain a tax deduction. However, a donation of a remainder interest in your farm or residence is subject to favorable rules. You can

donate a "remainder interest" (the rights to your home after you die) in your residence, live there for the rest of your life, yet get a current income tax charitable contribution deduction. The gift of a remainder interest in a personal residence isn't limited to your principal residence. A vacation home will also qualify. As will a yacht, houseboat or trailer as long as it has cooking, sleeping and bathroom capabilities. You also don't have to donate the entire property. The current low interest rates, combined with high home prices, make this a particularly valuable technique now.



Mr. Shenkman visited the Figge earlier this year when he conducted a seminar on Estate Planning for Quad City Attorneys and Fundraisers in the John Deere Auditorium. Shenkman is a nationally recognized expert on estate and tax matters whose offices are in Fort Lee, New Jersey and New York City. He has published thirty-eight books and more than seven hundred articles. A graduate of Fordham Law School, Shenkman received his undergraduate degree from the Wharton School of Business and an MBA from the University of Michigan.



LujackLexusQuadCities.com
Just south of Northpark Mall | 888-418-3026

ANNUAL GIVING FUND

GRANT WOOD CIRCLE

\$25,000 +

Marie H. Bechtel Trust

DIRECTOR CIRCLE

\$10,000 +

Amir and Lisa Arbisser
Andrew and Debi Butler
Martha Easter-Wells

CURATOR CIRCLE

\$5,000 +

Samuel and Marsha Allen
Tara Barney
Don and Dee Bruemmer
BITCO Insurance Company
The Easter Family Fund
Frances Emerson and Robert McClurg
Patricia Figge
Marty and Susan Katz
Patricia Hanson
Brian J. and Elizabeth Figge Lemek
J. Randolph and Linda Lewis
Brian and Diana Lovett
Peter and Elsa Lundy
Daniel A. Molyneaux
William Prichard
Scott and Raelene Pullen
Susan Quail
Alan and Julie Renken
Jon and Diane Robken
Mark and Deborah Schwiebert
Hugh and Debby Stafford
Ann Waterman

EXHIBITOR CIRCLE

\$2,500 +

Cynthia Carlson
Dean Christensen
John and Nancy Danico
Don Doucette and Lynn Drazinski
Thomas K. and Jennifer Figge
Ralph Gibson and Mary Junck
Gloria Gierke
Max and Jacki Guinn
John and Kay Hall
Perry and Elise Hansen
J. Hunt and Diane Harris II
Todd and Mary Beth Kunau
Ross and Judie Lance
Jill McLaughlin
Nancy Polis
Chris and Mary Rayburn
Kay Runge
Dr. Thomas and Mary Ann Stoffel
Eric and Barb Trimble
Paul and Donna VanDuyne
Catherine Weideman
Don and Lanora Welzenbach
Xenotronics

ARTIST CIRCLE

\$1,000 +

Bill Barnes
Joyce Bawden and Richard Karwath
Mark and Rita Bawden
Linda Bowers
Bill and Dixie Burress
Nate Clark and Melissa Anderson Clark
Ralph and Marcia Congdon
Carmen Darland
Don A. and Connie Decker
Mara and Michael Downing
Brock and Carol Earnhardt
Jeff and Lynda Eiringer
Stephen Figge
Kimberly-Findlay-Brackey and
Rick Brackey
Major General Yves Fontaine, Ret.,
and Kathy Fontaine
Bonnie Fox
Bill and Chris Gallin
John Gardner
Bernhard and Vera Haas

Alan and Kristina Harris
E.R. Hofmann
Marc and Gma Howze
Thomas C. Jackson and Joanne Stevens
Rajesh and Subha Kalathur
George and Charlotte Koenigsaecker
Jane and Kevin Koski
Kenneth Koupal and Thomas Kersting
KWQC-TV6
Joseph and Carolyn Martin
Glenn and Kathleen Medhus
Delia and Dave Meier
Dennis Miller
Larry and Carol Minard
Mumford Family Foundation
Richard D. and Rita R. Nelson
Henry and Linda Neuman
Matt and Lori Pappas
Priscilla Parkhurst
Steven and Bonnie Powell
Anne Powers
Douglas and Debra Roberts
Constance Runge
David and Wynne Schafer
Tim Schiffer and Pamela Kendall Schiffer
Larry and Marilyn Schreiber
Tony and Joyce Singh
Steve and Anne Sinner
John and Diane Slover, Jr.
Donald and Ardell Staub
Sam and Lori Syverud
The Thomas O. and
Margaret Nobis Foundation Fund
Deann Thoms
Larry and Jane Tschappat
Richard and Susan Vermeer
Marvin and Molly Wagner
Patricia Watkins
Mark and Dana Wilkinson
Will Wolf and Laura Murphy-Wolf

PATRON

\$500 +

Paula Arnell
Steve and Jane Bahls
A. Fred and Shirley Berger
Blackhawk Bank & Trust
John and Patricia Blackman
Mike and Barb Bleedorn
Kenneth and Shenea Brockman
Jane Chiappinelli and Jeff Miller
G. Kent and Nancy M. Cornish
Charitable Giving Fund
Barbara Davison
John and Jody DeDoncker
Michael and Linda Duffy
Eileen Eitheim-Rubelmann
Kristin and Jonathan Esche
Robert and Karlen Fellows
Dawn Fensterbusch
Joel and Diane Franken
William and Marvel Green
Marie-Catherine and Pierre Guyot
Phyllis Hallene
Beth and Mark Hancock
Paul and Paula Hartmann
Janice Hartwig
James Haverkamp
P. Charles Horan
David and Margaret Iglehart
John and Patty Johannesen
Diana Johnson and Melissa Johnson
Jan Jurgens Harper
Pam and Bob Karll
Steven and Katia Katz
Joe and Anna Kehoe
Marjorie Kinsler
Mary Lou Kotecki
Robert and Delores Kustom
Robert and Sherry Lindsay
Mary Lujack
James and Sylvia Martin
Ron and Cindy May
Robert and Janet McCabe
Frank and Ann McCarthy
Roger and Sarah Mohr

Moline Forge, Inc.
Molyneaux Insurance, Inc.
Daniel and Jennifer Molyneaux
Carolyn Moon
Rao and Veda Movva
Dick Taber and Brad Mumm
Bernadette Murphy
Steve Musson and Dori James
Linda Olsen
Vicki Palmer and Don Pruter
Mike and Annette Parejko
Heidi Parkhurst and Steve McCann
John Parkhurst
Peggy Pierce
Jeffrey Porter
Theodore Priestler and Emilie Giguere
Dennis and Lynn Quinn
Paul and Janet Rafferty
Stanley and Betty Reeg
Bruce and Sherry Ristau
Ed and Bobbi Rogalsaki
Dan and Marysue Salmon
Lewis and Debbie Sanborne
Mary Schiffer
Rick and Nancy Seidler
Scott County Library System
Ward and Sue Shawver
Dan and Gayna Stadelmann
Tom and Brooke Terronez
Stuart Thoms
Chris and Trish Townsend
Twin State, Inc.
James Walters
Robert and Kimberly Waterman
Tom and Maria Waterman
Gary and Becky Whitaker
Todd and Heidi Woeber
Dale and Marie Ziegler
Mark and Barbara Zimmerman

INVESTOR

\$250 +

Richard Anderson
Robin and Mary Jane Andrews
Leslie and Sara Bell
William and Judy Benevento
Robert F. Bina and
Delores De Wilde Bina
Michael Blaser
Prakash R. and Rupa Bontu, MD
Kathy Lewis Bouckley
Norm and Linda Bower
Thomas and Elaine Bridge
Patrick J. and Sue Broderick
Karen Brooke
Greg and Chris Bush
Roland Caldwell and Anne Corbi
James W. and Lisa K. Carstens
Paul Cavalli and Jack McKenney
Nancy Chapman
Beverly Coder
George and Nancy Coin
Jim Countryman and Laura Hopkins
Michele and Jack Dane
Starr and Michael Doak
Aaron and Natalie Dunlop
Carol and Clark Ehlers
Jane Emeis
Ted and Lisa Ewing
Tom Fiedler and Tom Taylor
Deb and Bill Fitzsimmons
David and Katie Franks
Manfred and Sandy Fritz
Peter Gierke
Amrit and Amy Gill
Jerry and Barb Hansen
Rob and Mindy Harson
William and Ruth Anne Hartman
Jim and Rose Ann Hass
Nancy and William Hass
Paul and Marcie Hauck
Nancy and John Hayes
Daniel and Judy Hazelton
Connie Heckert
Marjorie Hier
Jim and Judy Hilgenberg

Ann Hochhausen and Marlin Whitmer
Eileen Hoegner
Ardo and Carolyn Holmgrain
Susan Horan
James and Carol Horstmann
Harry Hoyt, Jr.
Dirk and Lois Jecklin
Judy and Jerry Johansen
Keith H. Johnson
Dean and Marika Jones
Jim and Diane Kapalis
Brian and Tracy Kinman
John and Jane Klinkner
Frank and Terry Klipsch
Kent and Cheryl Kolwey
Kevin and Susan Kraft
Richard and Judy Kreiter
Harold and Rosanne Krubsack
Lynda Kuehn
William and Kathy Langley
Robert and Joyce Lee
Bob and Kathy Lelonek
Lexus of Quad Cities
Robert and Barbara Lipnick
Marta Lucas
Donald and Janet Luethje
Tom and Marjorie Magers
Alan C. Marin
Marlene Marolf
Mona and Robert Martin
Joan Marttila and Richard Gast
Tim and Karen Maves
Susan McPeters
Mike and Diane Mennen
John Menninger
Christopher and Leanna Moen
Stephen and Melissa Mohr
John Molyneaux and Linda Biehle
Molyneaux
Edwin and Chris Motto
Martha Levy Neal
David Mark Nelson and
Ann Marie Campagna
Jacki O'Donnell
Anna Ohanesian
Jeanne and Paul Olsen
Alan Olson
George and Patricia Olson
Janet Shawver Parker
Leo and Renata Peck
Susan Perry and Stanley Goodyear
Glenn and Dakota Peterson
Mel Piff
Karla Polaschek
Curtis Poor and Kay Sigardson-Poor
Dan Portes and Judy Shawver
Alta Price
Dudley and Jean Priestler
Jeanie Jenean Quinn
Kristin Quinn and Anthony Catalano
Jerome and Carol Reid
Republic Companies
Randy Richmond and Audrey Brown
Caroline Ruhl and John Thompson
Brent and Kerri Schmidt
Linda M. Schneider
Susan Sharar and Leo Schubert
Peter and Christine Sharis
Sandra Miller Sohr
George and Sue Staley
David and Ann Stern
Gayla Sunderbruch
Nancy and Phil Tabor
Marie and Jerome Tarbox
Scott and Beth Tinsman
Leanne Tyler
Rusty and Doris Unterzuber
Robert VanVooren
Patricia Walkup
Andrew and Elizabeth Wallace
Wastyn and Associates, Inc.
Dana and Faye Waterman
Agnes and Ray Waterstreet
Matthew J. Welty
Ann Werner
Cal and Jill Werner

Donavon K. Weston and
Kathleen Christensen-Weston
Kirk and Lisa Whalen
Todd and Judy White
Sue Witte
Susanne and Rock Woodstock
Don Wooten
Mark and Laura Wriedt

BENEFACTOR

\$125 +

Jim and Nancy Adams
Steve and Anne H. Adler
Carol and Jack Albrecht
Barbara Alexander
Melanie Alexander and Erik Lie
Karen Anderson
LaDonna and Gary Anderson
Richard and Cindy Anderson
James and Dianne Andrews
John and Andrea Archer
Jeanette Augenstein
Ralph Baehle
Bart and Denise Baker
Gerald and Denise Barethin
Robert and Priscilla Bass
Michael Batz and Margaret Morse
J. Michael and Barbara Bauswell
Honey Bedell
Karen Beetham and Palmer Steward
Kirsten Belisle
Eileen Benson
Delia Bingea
Bob and Julie Blew
William and Ruth Bloom
Jerry and Carrie Bowman
John and Kathryn Bowman
Gene and Joan Brack
Allen Brass
Karolyn A. Britt
Peter and Lisa Britt
Mary Brodd and Katherine Dix
Ed and Jennifer Broders
Caryl and Jose Bucksbaum
Steven Burke and Darcy Anderson
Chris and Sheila Busch
Pleshette Butler
Caroline and Jerald Bybee
Brian and Barbara Cady
John and Clara Caldwell
Lee and Nicole Carkner
Karla Carpenter
Ed and Molly Carroll
Charles and Susan Cartwright
Joseph and Shelley Chambers
Greg and Annette Champagne
Jan and Diane Christensen
Mark and Rebecca Christy
David and Sharon Cinotto
Richard Clewell
Chris Comeaux
Katie Conrad
Michael Cortez
Neville Crenshaw
Ken Croken and Kathryn McKnight
Alex Cronkleton
Nathaniel and Deanna Curl
K. Vinje and Suzanne Dahl
Mark and Mary Davidsaver
Kaitlyn Davis
Robert and Patti DeBlaey
Chris Dunn and Elizabeth Russell
Leslie DuPree and Ben Beydler
East Moline Public Library
Candace and Ronald Egger
Kenneth and Barbara Emerson
Ann Ericson Nolan
Sandra and Gerald Eskin
Darla and Bob Evans
Mary Joy Allaert Feeney
Jerry Fisher
Matt and Karen Fitzsimmons
Helen and Blaine Flack
Tom and Diane Foley
Theresa Fooker
Carol Francis

Noted contributions were received as of September 20, 2015, through September 20, 2016.
Please contact Sara Morby at 563.345.6642 with any questions or corrections.

David and Connie Freund
Greg and Clare Gadiant
Jim and Jeanne Gale
Robert and Susan Gallagher
Susan and David Gallagher
David and Rene Gellerman
James and Stephanie Godkre
Rhonda Golden
Ann Green
Morgan Griffin
Luanne and Tom Gritton
Kathy and Cliff Gronauer
Rex and Susan Grove
Philip and Greta Habak
Barbara and James Hahn
Erik and Tessa Hahn
Roger and Laurie Hakeman
Halligan McCabe DeVries
Funeral Home
Carolyn Hamilton
Daniel and Amber Hardin
Michael and Tamra Harper
Judy Hartig
Katherine Hellberg
John Higgins
Lynn and Gary Hirsch
John Hobbs and Davia Gallup
Larry and Dianne Hosford
Stacey Houk
Frederick and Virginia Houlton
Michael and Hedy Hustedde
Ann Hutchinson
Raphael Iaccarino
Gary and Nancy Ingelson
William and Deborah Irex
Chelsea Jacobsen
Brian Jennings
Anne Johnson
Steven and Jean Johnson
Matt and Julie Johnston
Jeanne Jurgens
Ellis and Kristi Kell
Donna and Vince Kelly
Katie Kiley
Scott Killip and Shellie Darr
Lee and Julie Kimball
Caroline Kimple
Thomas and Kimberly Kirschbaum
Andrew Kirkland
Richard Kleine and Jane Rouse
Donna Knickrehm
Wolf and Linnea Koch
Georgie Koenig and Lloyd Kilmer
Scott and Celia Kool
Barbara Korbelik
Gwen Korn
Dean and Marybeth Kugler
Ted and Rebecca Kurt
Kelsey Kuntz
Charles and Donna Kuykendall
Michelle Ladwig (Indigo)
Sally and Robert Lambert
Gary and Gerda Lane
Barbara Langley
Mark Latta
Margaret Laupp
Peter and Beth Laureijs
Mary Ann Linden
Catherine Litwinow
Cyndy and David Losasso
Jerry Lowe and Janet Brown-Lowe
Fred and Cindy Luskasik
Carmen and Bill Lundie
Curtis Lundy
Nichola Lybbert
Geoffrey and Helen Macalister
Edward and Anne MacBurney
Gloria Malooly
Barbara Manlove
Marilyn and Mark Marmorine
Jeff and Jo Ellen Maurus
Jean L. Mayes
Cheryl and Waylyn McCulloch
Paul and Sue McDevitt
Carrie and Charles McGuire
Mary and Bob McClinis

Mike McMahon
Gary and Jean Medd
Vijay Medithi and
Pushpa Manukonda Medithi
Matthew Meyer
(Northwest Chiropractic Center)
John and Carol Micheel
Italo and JoAnn Milani
Kathleen and Roger Miller
Bonnie and Gerald Moeller
Cathryn Mongiat
Barbara Montgomery
Jerry and Marla Moore
Brian Morley
Dave and Charlotte Morrison
Emily and Robert Navarre
Kaaren Nelson
Linda Newborn
Bruce Noah
Gary and Nancy Nolan
Robert and Patricia Nolan
Don and Angela Normoyle
Rosemary Noth
Terry and Linda O'Connell
Jeanne and David O'Melia
George Ohley
Ahmed Okba and Lola Challoner
Olivia Ottinger
Mr. and Mrs. James Partridge
Marjorie Pentland
David Perkins
James J. and Kathy S. Phelan
Elaine Phelps and Bill Sharp
Joyce Piechowski
Carol Plouffe
Kate Poweska
Meg Priester and Logan Peet
Quad Cities Executive Toastmasters
Megan Quinn
Anne G. Rapp
John and Mariann Reese
Don and Connie Retherford
Douglas and Kyle Rick
Peter and Merriam Rink
Paul and Karen Rohlf
Mark and Rita Rosauer
Curtis and Elizabeth Roseman
Jillian Ross
John and Celeste Roth
Byron and Alice Rovine
Thomas and Jenny Rowe
Gordon and Cheryl Salley
David L. and Ginny Samuelson
Jennifer Saintfort
Ralph Saintfort
Scott and Anne Saveraid
Carol Schaefer
Max Schardein
Martha and Timothy Schermer
Sam and Nancy Schold
Jim Schwarz
Tracy and Matt Schwind
Ivan and Chris Sederstrom
Donna Seifert
Nancy Servine
James F. and Elizabeth Shearouse
Laraine Shellenberger
Donald Patricia Sierk
Jerry and Julie Skalak
Chuck Slack
David and Dale Smith
James and Beverly Smith
Steve and Patti Sorensen
Sheila Spickermann and Allie Spickermann
Tom Spitzfaden
Scott Stange
Todd and Sharon Staples
David and Sherry Staub
Darlene and Mike Steffen
Crist Stevenson
Mary Helen Stewart
William and Carmen Stout
Bud and Lori Sturtzer
Gene and Susan Sullivan
Sally A. Sullivan
Sharon Suss and Bill Smutz

Jim and Linda Tank
Rand and Carolyn Tapscott
Arthur and Corinne Tate
Clara Delle Thompson
Sen. Margaret Tinsman
Gwen Tombergs and Dave Wayne
Clayton and Sue Traver
John and Katie Tritt
Herb and Diane Trix
Alan and Myrna Tubbs
Samantha Turner
United Way of Northern Utah
Charles and Joyce Urbain
Kenneth Urban
Denise and Thomas Van Daele
Craig and Nancy Van Hook
Norman and Margaret Vandekamp
George and Jane Vieth
Diane von Dresky
James and Melissa von Maur
Gerald G. Wala and Penny Dorgan
Harry R. and Maureen Wallner
Patrick Walton and Theresa Jantz
Randy and Debra Warndahl
Sibyl D. Waterman
Ida Weibel
Joseph Wesselman and Jennifer Duburg
Pamela White
Linda Wilkinson
Greg and Karyn Witte
David and Marcy Wolf
Joe and Angela Woodhouse
Steve and Barbara Wright
Shawn and Sara Wynn
Jeffrey A. and Donna Young
Karin Youngberg
Robert and Judy Zeidler

GRANTS AND SPONSORS

\$100,000 +
Bechtel Trusts & Foundation
John Deere Foundation
Quad City Cultural & Educational
Supporting Charitable Trust

\$50,000 +
Hubbell-Waterman Foundation

\$10,000 +
Beaux Arts Fund Committee
Birdies For Charity
Brand-Boeshaar Foundation Fund
Genesis Health System
Regional Development Authority
Roy J. Carver Charitable Trust
Jim and Michelle Russell
Scott County Regional Authority
Singh Group Merrill Lynch
Windgate Charitable Foundation

\$5,000 +
Bank of America Charitable Foundation
Joyce and Tony Singh Family Foundation
David and Wynne Schafer
US Bank

\$2,500 +
Alcoa Foundation
Thomas K. and Jennifer Figge
J. Hunt and Diane Harris
Sive Star Salon and Spa
Barbara Leidenfrost
J. Randolph and Linda Lewis
Jewish Federation of the Quad Cities
Lexus of Quad Cities
Lujack Luxury Motors
Ohnward Bancshares Bank, Inc.
Rock Island Art Guild
Mark and Deborah Schwiebert
Rick and Nancy Seidler
Triumph Community Bank

1,000+
Barry Anderson of Anderson, Lower,
Whitlow, PC
Peter and Kim Benson
Don Doucette and Lynn Drazinski
Jeff and Lynda Eirinberg
Janice Hartwig
The Junior Board of Rock Island
Mary Lujack
Delia and Dave Meier
Mills Chevrolet
Moline Foundation
Paragon Commercial Interiors
Pederson Paetz Design
Susan Perry and Stanley Goodyear
Quad Cities Chamber of Commerce –
Downtown Partnership Division
Quad City Arts
Quad City Bank & Trust Co.
Susan Quail
Rauch Family Foundation 1, Inc.
Sedona Technologies
Studio 483
Tom and Brooke Terronez
Terrostar/Medix Dental
Deann Thoms
Catherine Weideman and John Gardner
Wells Fargo Bank
Xenotronics
Mark and Barbara Zimmerman

500+
Tara Barney
Bridgestone Americas Tire
Operations, LLC
A-L-L Equipment
Dean Christensen
Sue Horan
John J. Quail Foundation
Professional Touch Cleaning Service
Royal Neighbors of America

IN-KIND

AAA-The Auto Club Group
Amir and Lisa Arbisser
Beaux Arts Fund Committee
Michael Blaser
Elizabeth Brooke
Jane Chiappinelli and Jeff Miller
Dean Christensen
Chocolate Manor
Clazzy Designs
Mike and Sally Dailey
John and Nancy Danico
Starr and Michael Doak
Arlene Erusha
Kimberly Erusha
Deb and Bill Fitzsimmons
Rose Frantzen
Galvin Fine Arts
John Gardner and Catherine Weideman
Glass Heritage
John and Kay Hall
J. Hunt and Diane Harris II
Heart of America Group
Hot Glass, Inc.
Hotel Blackhawk
Stacey Houk
Ralph Iaccarino
Chris Jackson
James Jackson
Joe and Ana Kehoe
Chris Kinsler
Marjorie Kinsler
Kone, Inc.
James and Deba Leach
J. Randolph and Linda Lewis
Delia and Dave Meier
Mielke Stair Company
Mimzi Art and Frame
Steve Musson and Dori James
Necker's Jewelers
George Olson
David Plowden
Anne Powers

Fred and Pat Priester
Susan Quail
Randy Richmond
Re-Cre8 Studio
River Center Adler Theatre
David and Wynne Schafer
Jerry and Judy Schick
Tim Schiffer
Loren Shaw Hellige
Steve Shippey
Malavika and Devendra Shrikhande
Sign Innovations
Steve Sullivan
Dick Taber and Brad Mumm
Townsend Engineering
Ellen Wagener
Uncommon Ground
Antonio Ortiz Valverde
Whitey's Ice Cream
Mark and Laura Wriedt
Xenotronics
Mark and Barbara Zimmerman

INSTITUTIONAL MEMBERS

Augustana College
Black Hawk College
Eastern Iowa Community College
Knox College
Palmer College of Chiropractic
St. Ambrose University
University of Iowa
Western Illinois University

IN MEMORY

George Cowan
J. Randolph and Linda Lewis
Donna Smith
Ann Figge Brawley
Clark and Carol Ehlers
Sylvia Evans
James Foley
J. Randolph and Linda Lewis
Tom Gildehaus
Dan and Marysue Salmon
Ann Waterman
Don Heggen
Anonymous
Brindle Schermer
Joyce Bawden and Richard Karwath
Dr. Alex Stone
J. Randolph and Linda Lewis

IN HONOR

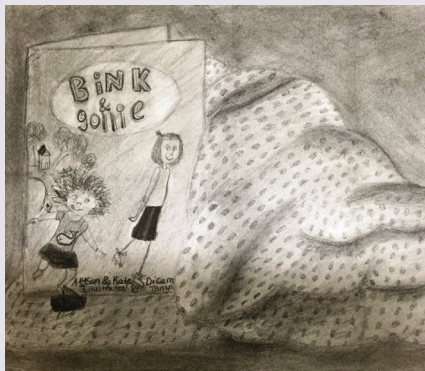
Tom and Mary Gildehaus
John and Kathy Bouckley
Mark and Marie Latta
Mark Latta, Jr.
Education and Outreach
Mike and Jennifer Cavins
Dee Bruemmer's Retirement
Anonymous
John and Nancy Danico
Medic Emergency Medical Services
Scott and Raelene Pullen
Kay Runge
Tim Schiffer and
Pamela Kendall Schiffer
Scott County Board of Supervisors
Hugh and Debby Stafford
Todd and Heidi Woeber

A proud sponsor of
Figge programs



ART PALS

In August of 2015, the Figge began a partnership with the John Deere Foundation's JIVA initiative and the Creative Arts Academy (CAA) to connect girls in Davenport and Railmagra, India, for an art exchange program called Art Pals. Through this program, girls, ages 10-13, have exchanged artworks back and forth as they've learned about each other's cultures and gained confidence in their ability to communicate using the visual arts. Students from both countries reflect on themes from the CAA's curriculum: Connections, Roots, Courage, and Journey. In addition to exchanging artworks, the students write letters that go beyond a discussion of their art and create a bond of friendship and empathy between the students:



CAA STUDENT

I'm so excited to exchange art with you! One of my passions is creating art. I love to sculpt and sketch, but I'm learning to like painting, also. Ever since I was little you could find me creating something. I love getting my hands dirty with art. The artwork I'm sending you is a sketch of four items I think represent who I am and my connections. The book is a childish book that represents my silly side. The seashell represents my mysterious, but gentle side. The blanket was one I used to use when I was a baby and represents my caring, loving side. Last is an eraser, because I make lots of mistakes, but also I love to make art and that is a tool I use often. I have so many questions to ask you! Who is your family? Do you have any pets? Do you go to school? If so is it far from where you live? (My school is 5 minutes from my house). What is your culture like? What are your interests and favorite things?

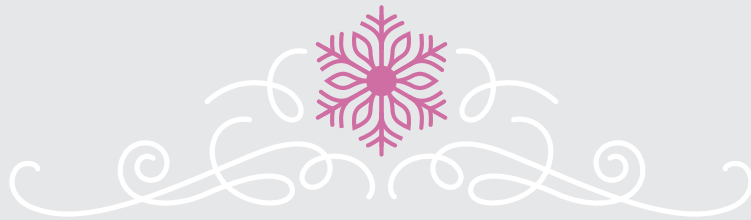


RAILMAGRA STUDENT

My school is about 4 km from my house. I live with my grandmother, parents, one sister, and one brother. My father works as a clerk in a Geological Department and my mother is a housewife cum farmer. We also keep cattle for milk. I help my mother with household and agricultural work. My elder sister is 16 years old and studies in school. She got married last year and her husband runs a cloth shop with his father. I like to sing, dance, make drawings, and study. [In my art] I have tried to depict the connections in different thoughts. Bad thoughts are shown in jealousy, pain, fear and shame. The positive thoughts include: success, hope, love, support, happiness, feeling proud and fearlessness.

In its second year, the Art Pals program is expanding to include additional students from both communities. Figge Director of Education Melissa Mohr states: "While Art Pals began as a way for students to swap artworks, it has grown to become something even more powerful. It enables the girls to teach each other about their differing cultures, encourages tolerance and understanding at the global level, and builds confidence in their ability to communicate through the arts. It fits in perfectly with the Figge's mission of 'Bringing Art and People Together'."





HOLIDAY EVENTS

MEMBER APPRECIATION MUSEUM STORE DISCOUNTS

Thursday, December 1 through Sunday, December 4
The Figge is your one-stop-shop for original holiday gifts! Stop into the Museum Store to receive double discounts on all non-consignment items, plus take advantage of free gift wrapping on all purchases—just for being a Figge member! Purchase calendars, jewelry, ornaments, mugs and books featuring works by famous artists—van Gogh, Klimt, and Frank Lloyd Wright and many more. Complimentary holiday treats also will be available for members to enjoy.

HANDMADE CITY



Handmade City will host its annual holiday sale in the Figge lobby on Saturday, December 3 from 10 a.m. to 5 p.m.

Museum admission is free so bring your friends for a fun-filled day in support of local art and artisans.

GIVE THE GIFT OF ART

Give the gift of art this holiday season! Our museum store is the perfect place to find a one-of-a-kind gift or gift certificate for anyone on your list. Have a budding artist to buy for, or just want to encourage a friend to try something new? Gift certificates are also available in any amount for art classes. Or, a gift membership is a perfect way to provide art experiences throughout the year!

HOLIDAY KICK-OFF FAMILY FREE DAY SATURDAY, NOVEMBER 19

Free Admission All Day
Stop by and help us celebrate the start of the holiday season! Enjoy complimentary cookies and cocoa as kids and their big people enjoy decorating ornaments for display on the Figge's trees or take home as a special memento. Stroll through the galleries to see what's new, or stop in the museum store to do some holiday shopping, or to fulfill your own wish list!

FREE CONCERT: HEARTLAND MARIMBA

5 p.m. Thursday, December 1
\$6 Sandwich Baskets
Free and open to the public. Bring the whole family and enjoy a concert by Heartland Marimba Festival members.

HOLIDAY WORKSHOP

6–8 p.m. Thursday, December 1
\$15/member family of 4 or \$20/non-member family of 4
\$3 for each extra person
Free to children age 3 or younger
\$10/scout troop plus \$5 per scout
Be the architect and builder of a dreamy gingerbread house during this cheerful holiday workshop. Marshmallow clouds, gumdrop sidewalks and cinnamon cereal roofs are just a few of the ideas you can use to create an imaginative and delicious house! Families can also create ornaments, gift cards and print their own wrapping paper during this crafty bonanza. Hot cocoa and cookies will be served. Pre-registration required. To register, contact Heather Aaronson, haaronson@figgeartmuseum.org or 563.345.6630 or register in the Museum Store.



HOLIDAY MEMBER DINNER

Thursday, December 8
6 p.m. Cocktail Hour • 7 p.m. Dinner
\$40/person; includes buffet dinner and glass of wine or beer
Oh, what fun! Join us for dinner, friends and fun with entertainment by Comedy Sportz Quad Cities to celebrate the close of another successful year at the Figge. Members will receive a formal invitation by mail. To reserve your seat, call Tessa Pozzi at 563.345.6638. Payment is required at the time of reservation.

HOLIDAY TOURS

Saturdays, December 3, 10 & 17
Sundays, December 4, 11 & 18
Get in touch with the spirit of the season through thought-provoking gallery tours created by museum docents. Tours are free with membership or paid admission and begin at 1:30 p.m. Meet in museum store.

HOLIDAY HOURS

Thanksgiving Day Closed
Christmas Eve Day Closed
Christmas Day Closed
New Year's Day Closed





for what
moves you

Renowned Quad City artist, Raphael Iaccarino

WE PAY ATTENTION TO WHAT MATTERS MOST. YOU.

Renowned Quad City artist, Raphael Iaccarino, is known by his spectacularly colorful and massive botanical watercolors that not only grace the walls of Quad City landmarks, but also the homes of notables, including Clint Eastwood. However, Ralph's celebration of the artistic process was colored by a continual battle with spine pain, as well as arthritic thumb and shoulder pain.

Through a series of surgeries and pain management procedures, the fellowship-trained surgeons at ORA Orthopedics have allowed Ralph to regain his ability to create once again - without pain. Ralph is now looking ahead to his 7th decade, his creative passion is now colored with joyous optimism, "My best work is yet to come." To learn more about Ralph's story and how we can help you move, visit qcora.com or call 563.322.0971.

